

Other Reports



RESEARCH & BUSINESS
DEVELOPMENT CENTER

Eastern Idaho COVID-19 Economic Report | July 13, 2020

About the Report

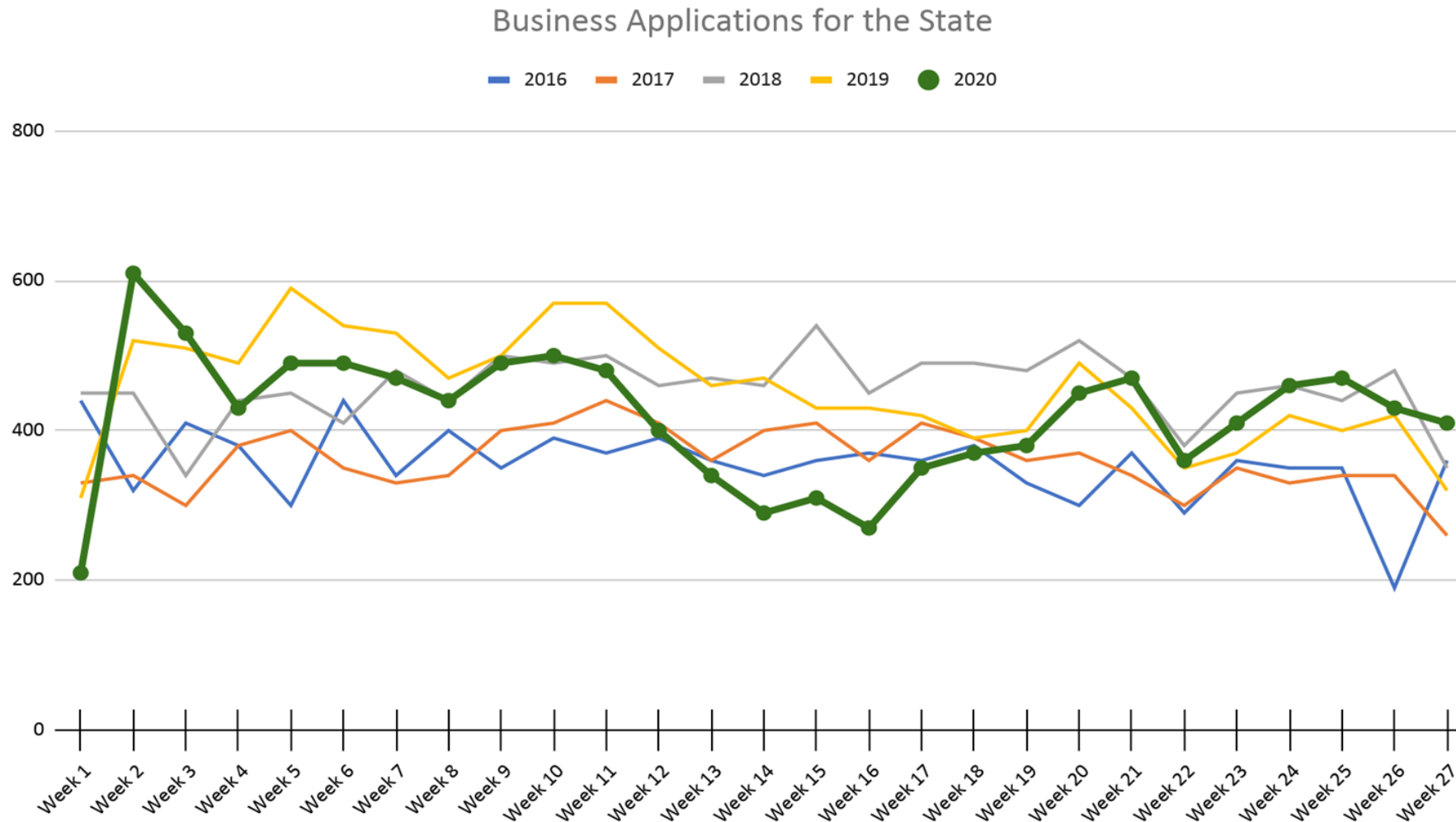
The RBDC is tracking the economic impact of the COVID-19 outbreak on eastern Idaho. The report is compiled by RBDC student research teams and will be updated weekly. We hope you find the report helpful to you. We appreciate the organizations that have contributed funds to make this report available. Please contact Will Jenson (w.jenson@rbdcenter.org) if you would like to participate in our weekly industry surveys or would like to contribute to our report in some other way.

-Thank you

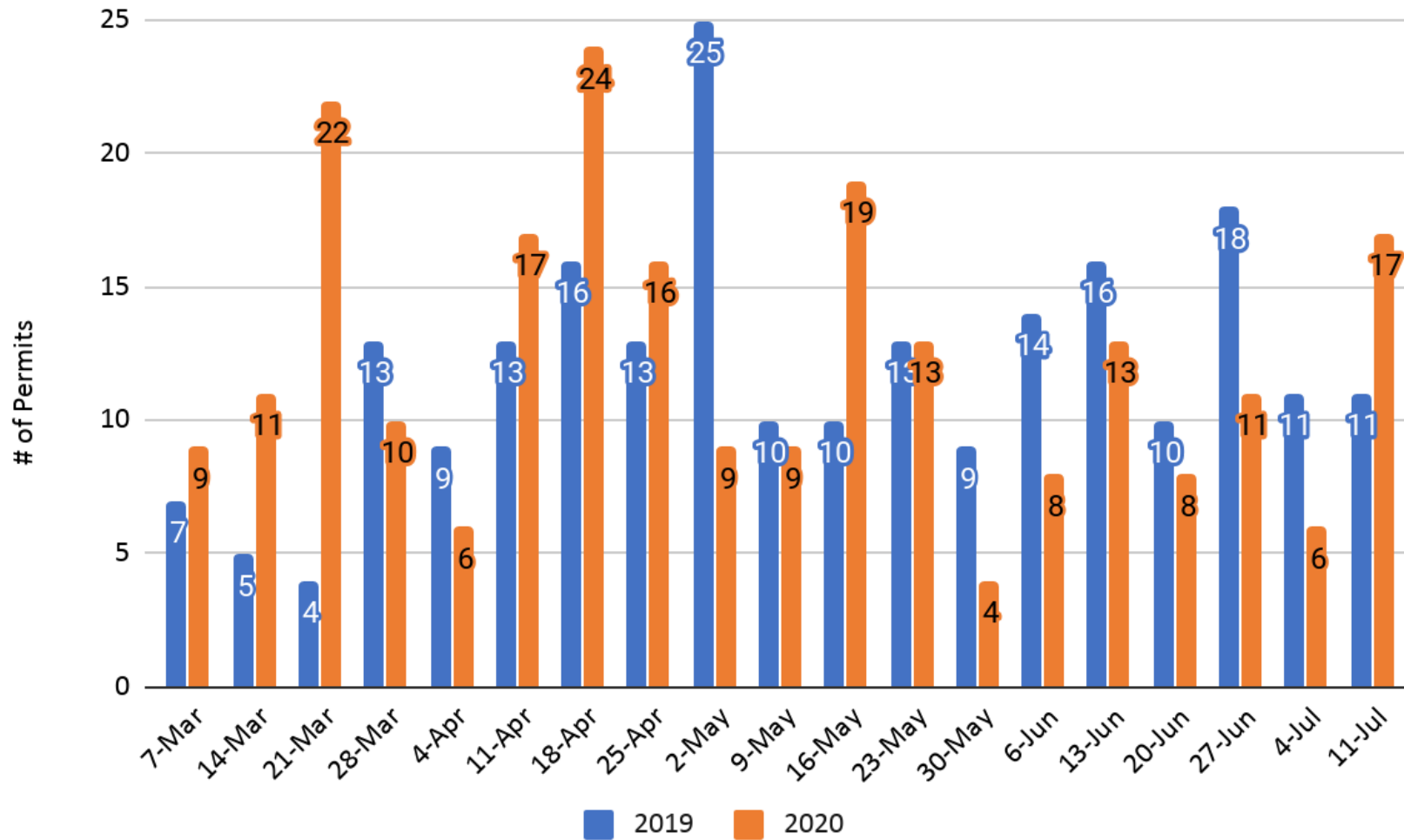
New This Week

- Business Formation Statistics (BFS Applications) is at or above past years applications
- Shift in Tax Dates from 2019 to 2020 in the State of Idaho could affect the Corporate and Individual Income Tax from March to May
- College Fall Semester plans include face to face class options
- Traffic Volumes in Bonneville County are higher than before the Stay at Home Order

Business Formation Statistics (BFS Applications)

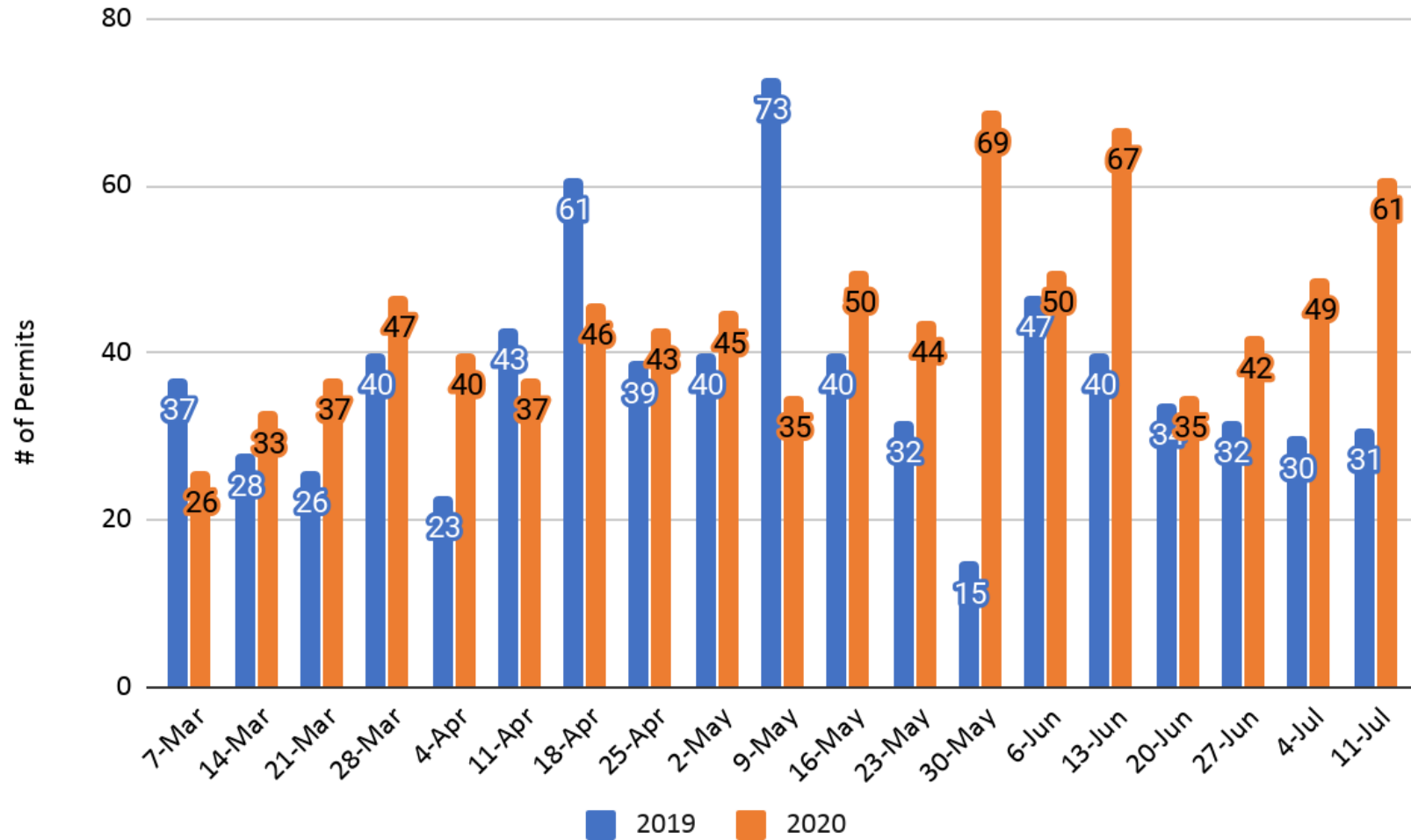


Building Permits – Madison County



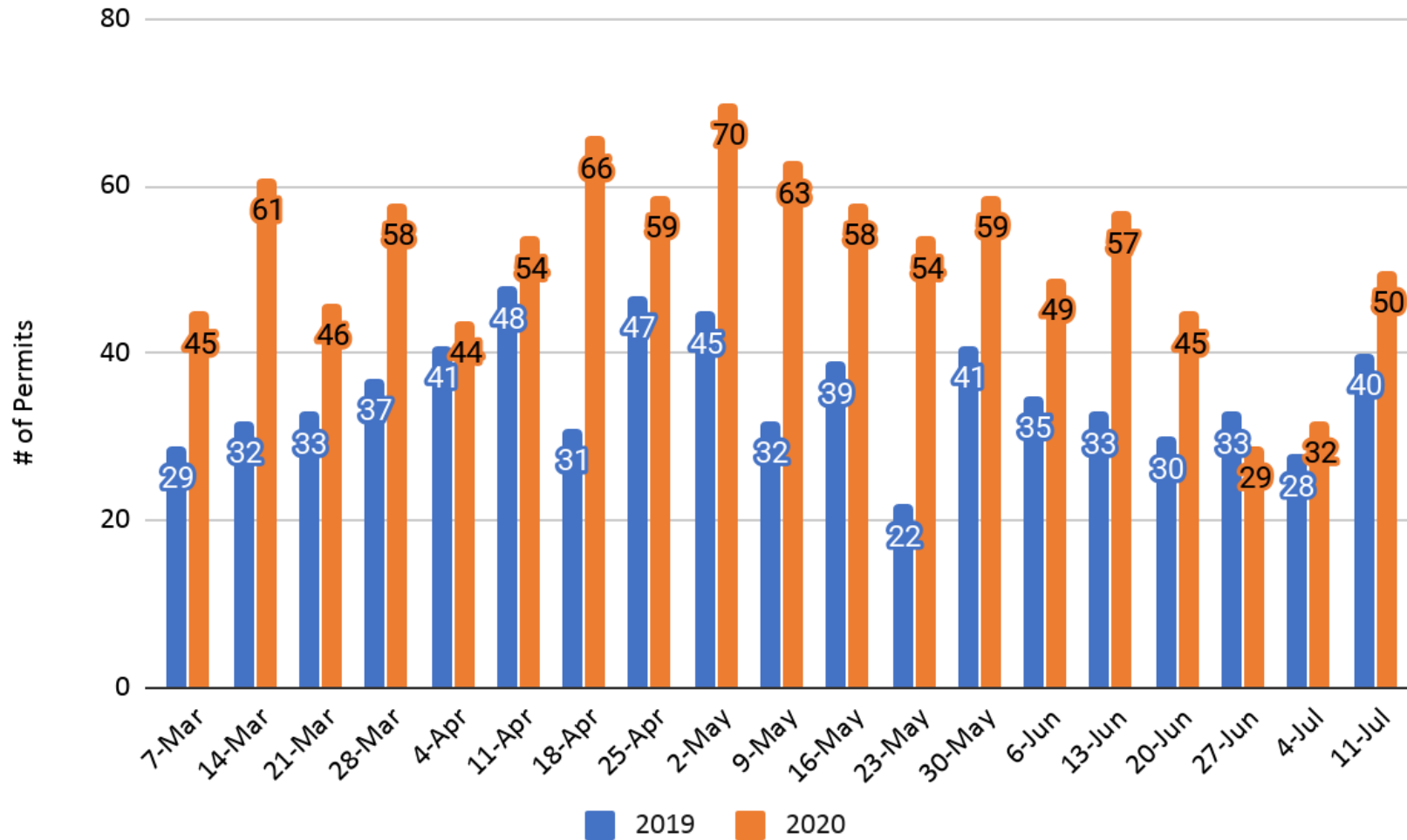
Source: https://web.dbs.idaho.gov/eTRAKIT3/Custom/Idaho_PermitSearch.aspx

Building Permits – Bonneville County



Source: https://web.dbs.idaho.gov/eTRAKiT3/Custom/Idaho_PermitSearch.aspx

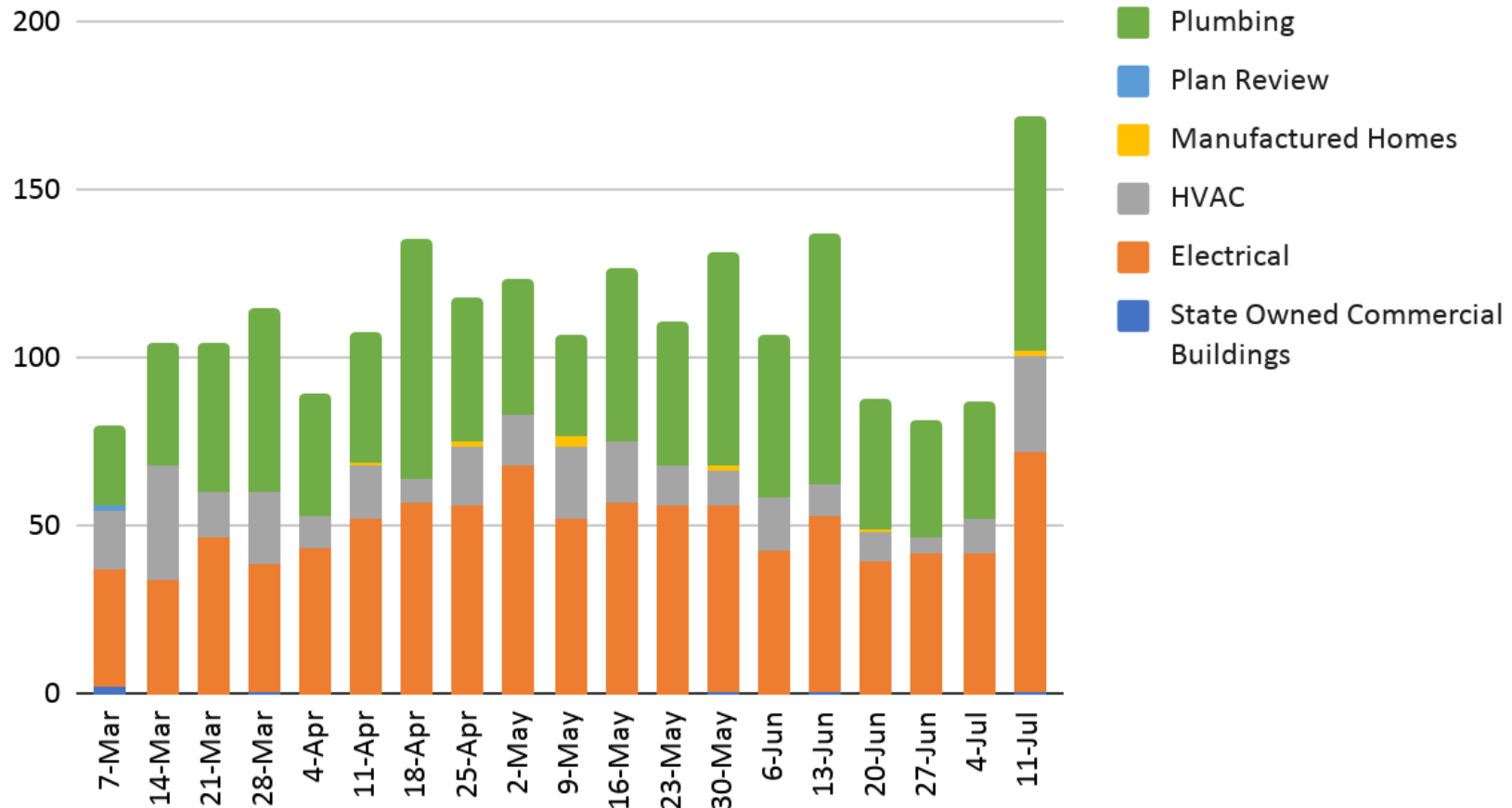
Building Permits – Jefferson County



Source: https://web.dbs.idaho.gov/eTRAKiT3/Custom/Idaho_PermitsSearch.aspx

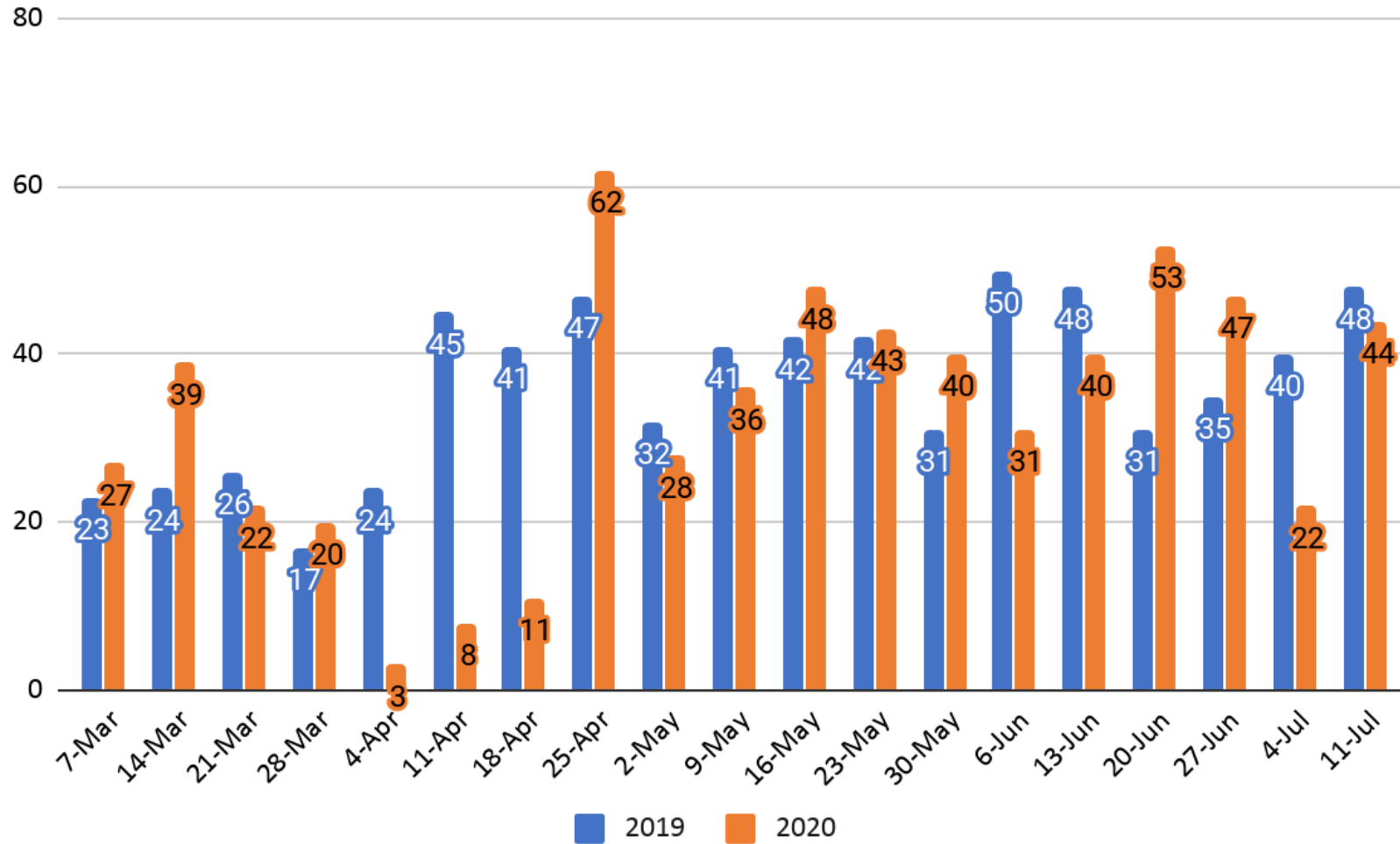
Building Permits – Bonneville, Jefferson, & Madison Counties

2020 Total Permit by Type



Source: https://web.dbs.idaho.gov/eTRAKiT3/Custom/Idaho_PermitSearch.aspx

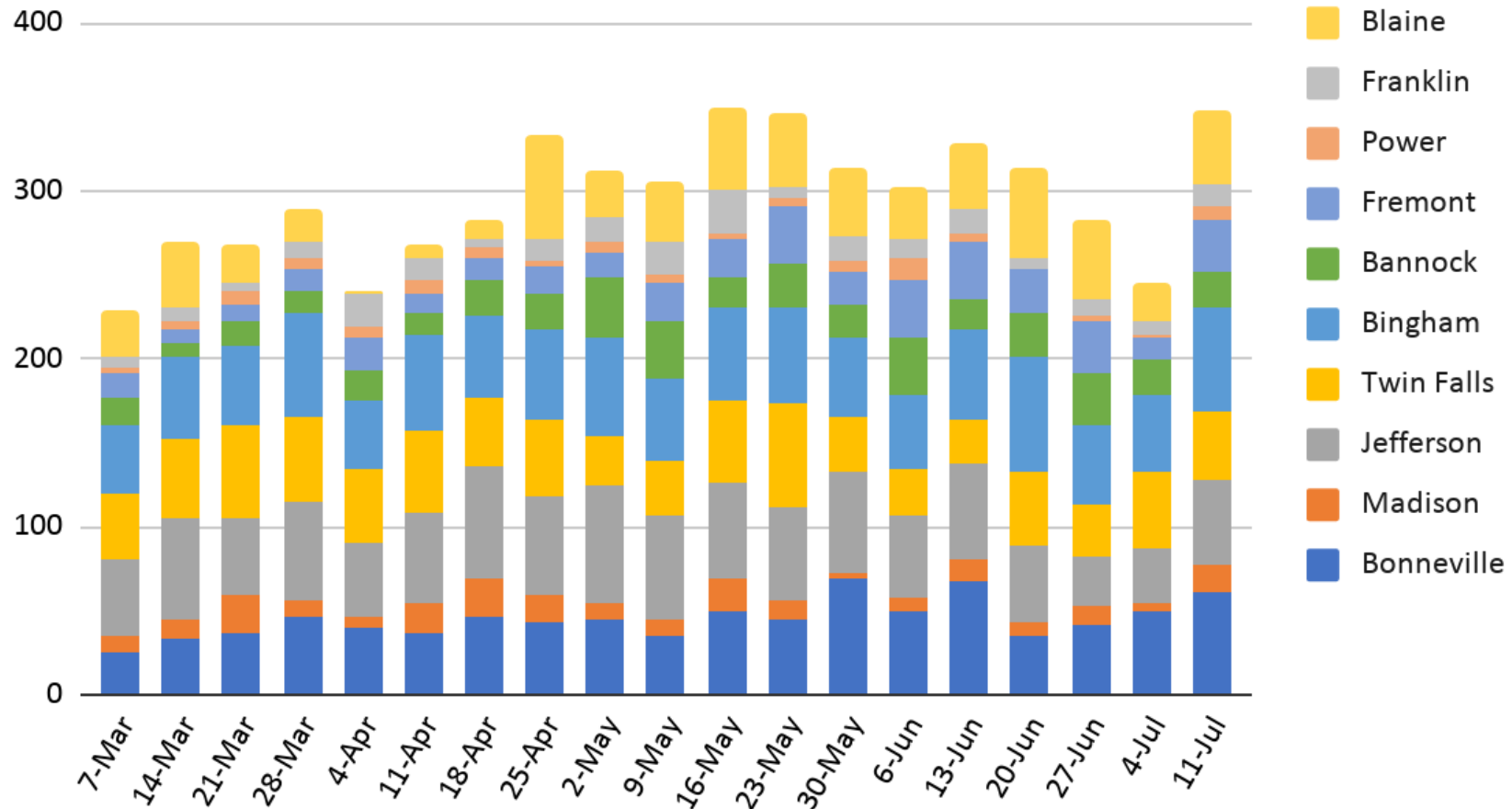
Building Permits – Blaine County



Source: https://web.dbs.idaho.gov/eTRAKIT3/Custom/Idaho_PermitsSearch.aspx

Building Permits – Eastern Idaho Counties

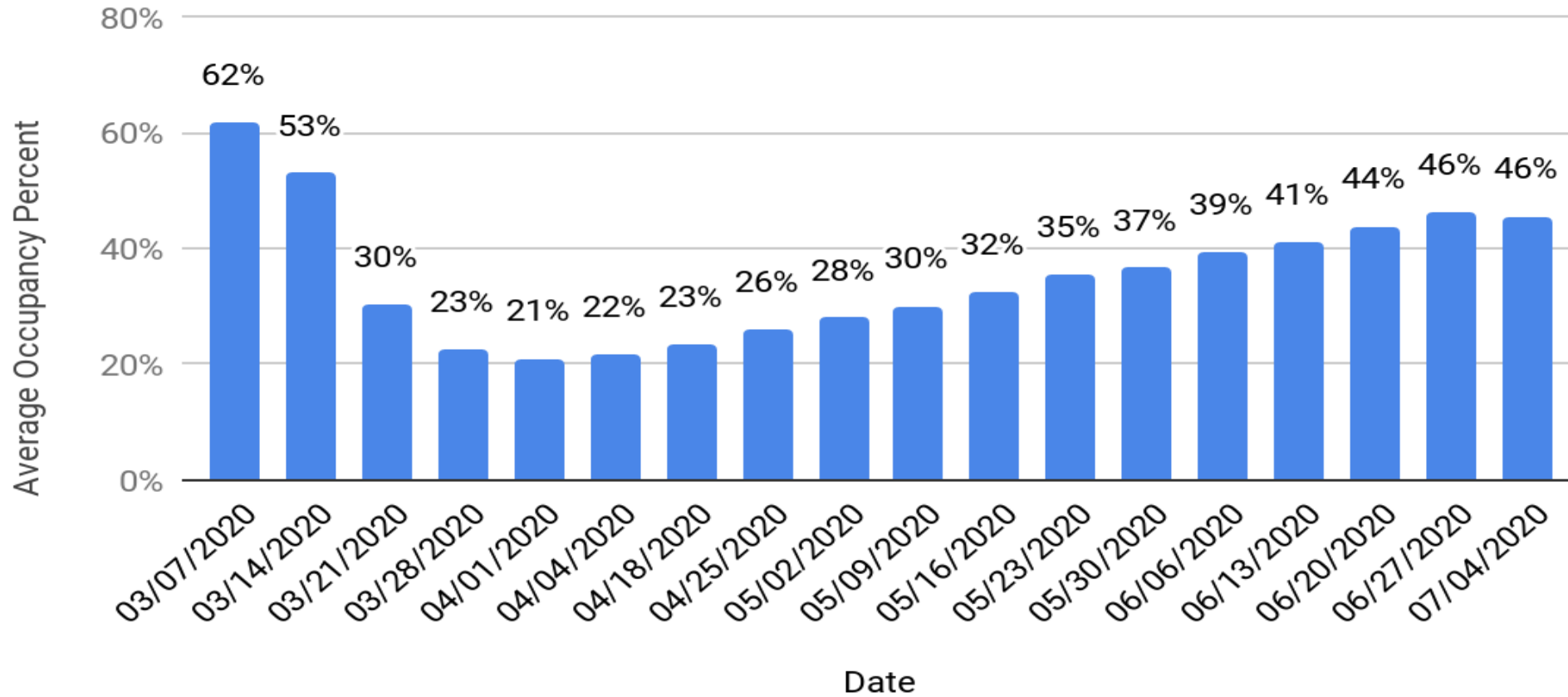
2020 Building Permits



Source: https://web.dbs.idaho.gov/eTRAKi3/Custom/Idaho_PermitSearch.aspx

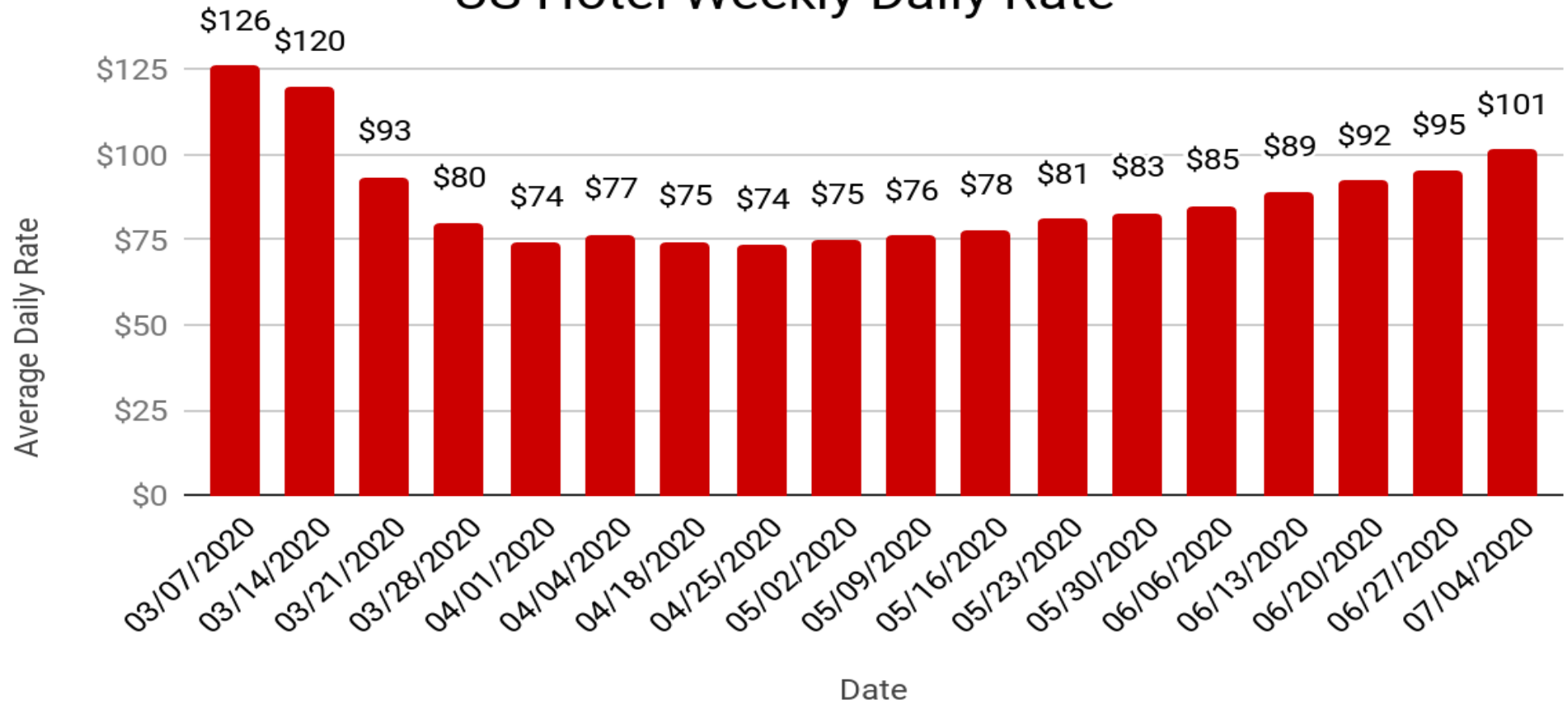
US Hotel Weekly Data

US Hotel Weekly Occupancy Data



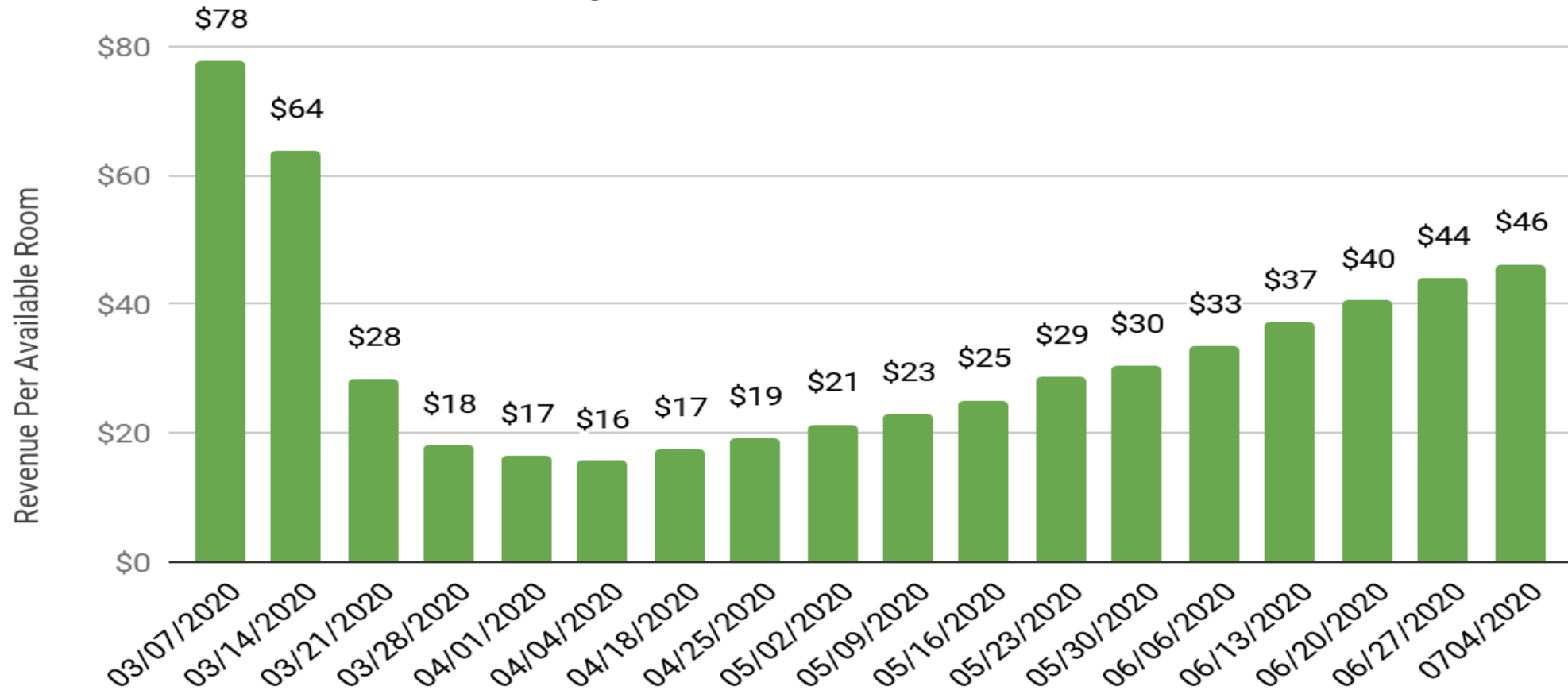
US Hotel Weekly Data

US Hotel Weekly Daily Rate



US Hotel Weekly Data

US Hotel Weekly - Revenue Per Available Room



College Fall Semester Plans

Brigham Young University - Idaho (BYU-Idaho)

- Mixture of face-to-face courses with either mandatory or voluntary attendance, remote courses and hybrid courses

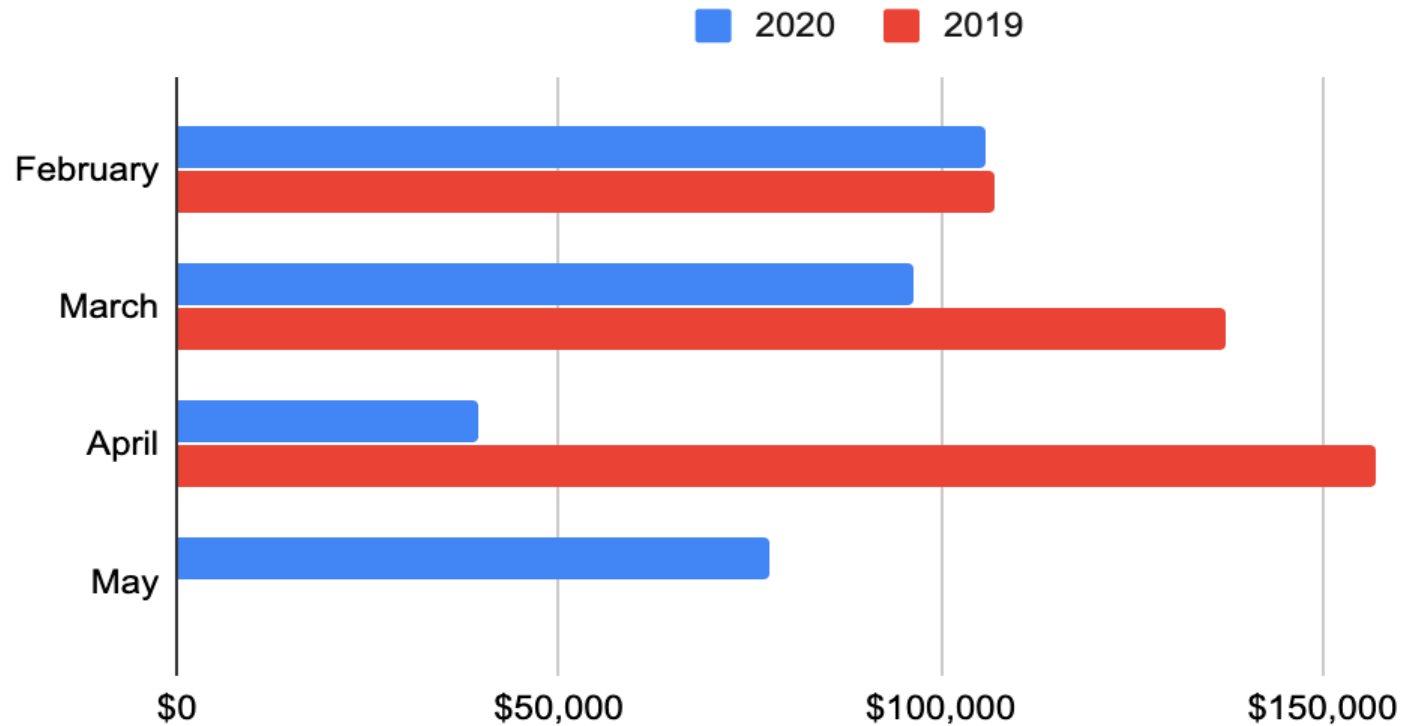
Idaho State University (ISU)

- Resume all face to face courses
- End classes two days before Thanksgiving with final exams taking place a week after the break
- Courses moved to larger meeting places

[Source](#)

Auditorium Tax

Idaho Falls Auditorium Tax Net Collections



*From Idaho Falls Auditorium

<https://tax.idaho.gov/i-1039.cfm>

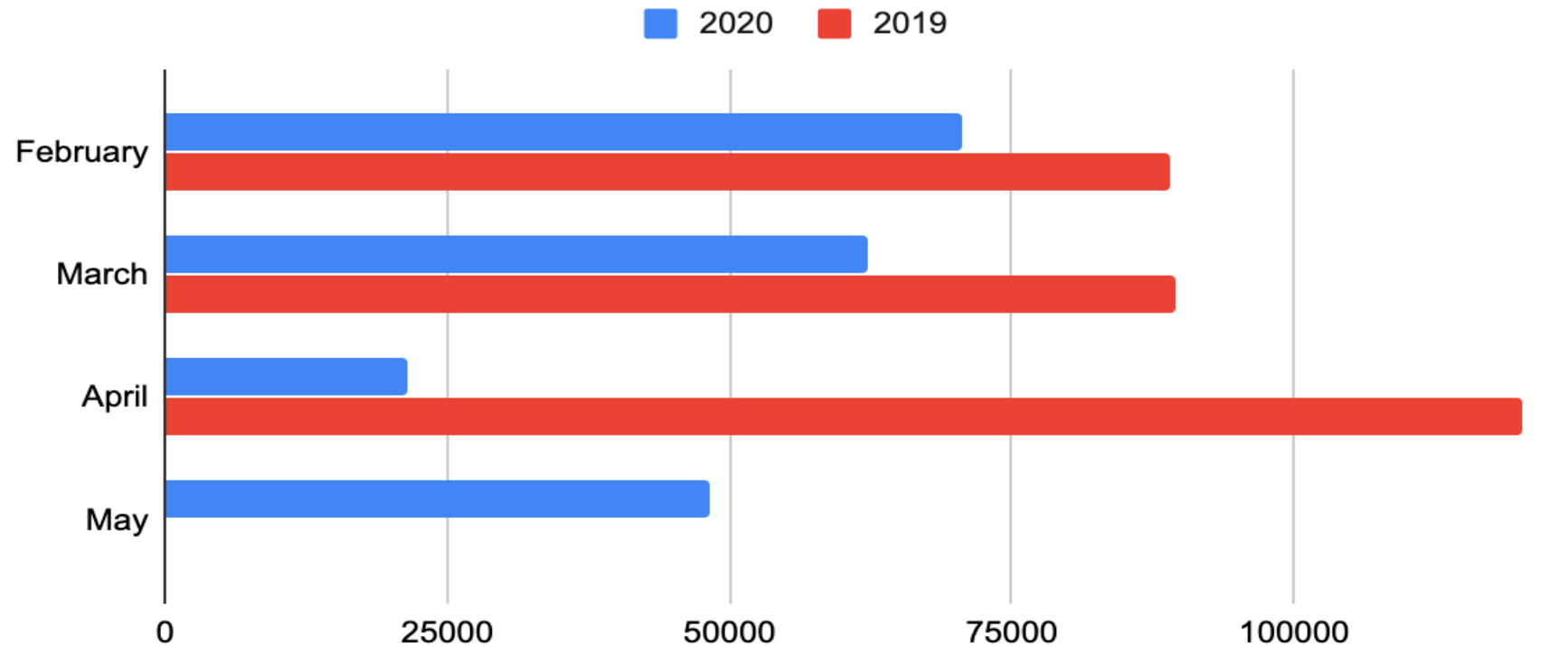
June Collection for May, May Collection for April, April Collection for March, March Collection for February.

One month lag time on reporting.

Idaho Falls 2019 Not Listed on tax.idaho.gov



Pocatello-Chubbuck Auditorium Tax Net Collections



*From Pocatello Auditorium

<https://tax.idaho.gov/i-1039.cfm>

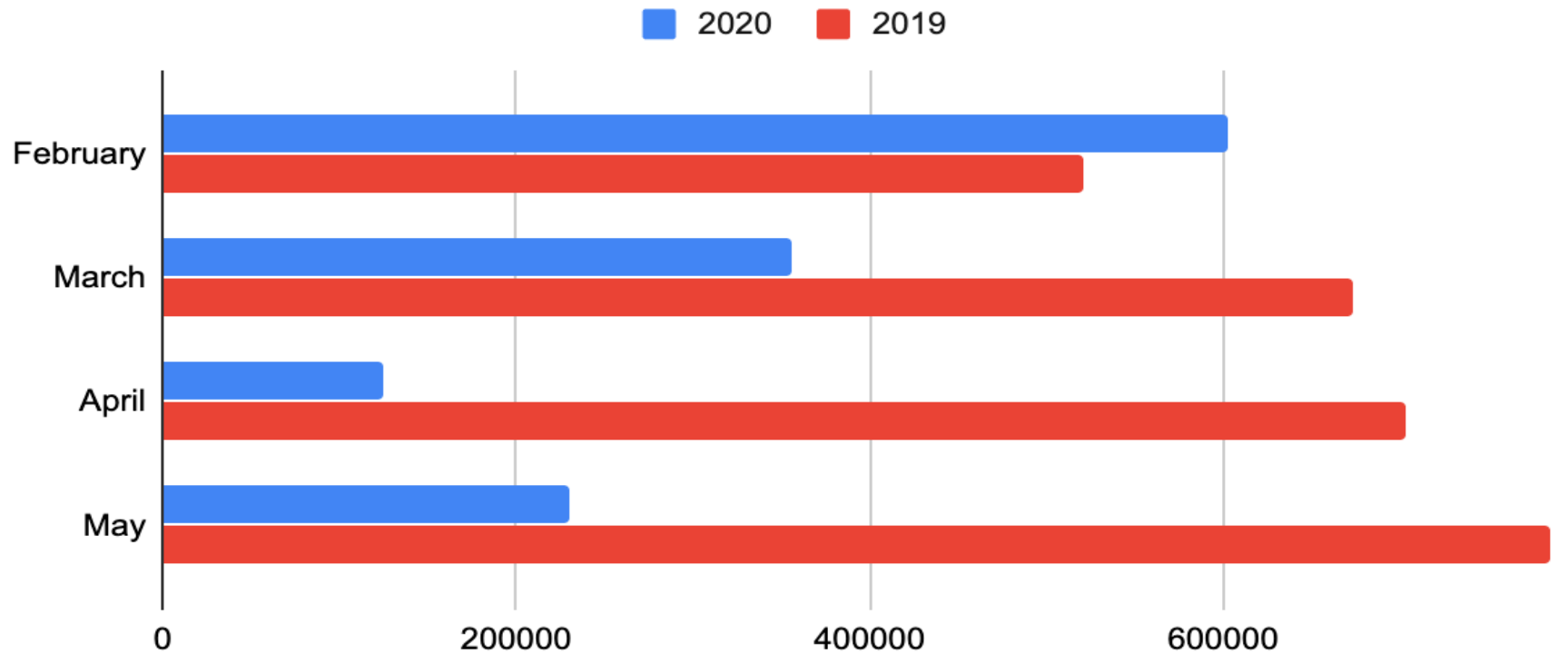
June Collection for May, May Collection for April, April Collection for March, March Collection for February.

One month lag time on reporting.

Pocatello 2019 Not Listed on tax.idaho.gov

Auditorium Tax

Boise Auditorium Tax Net Collections

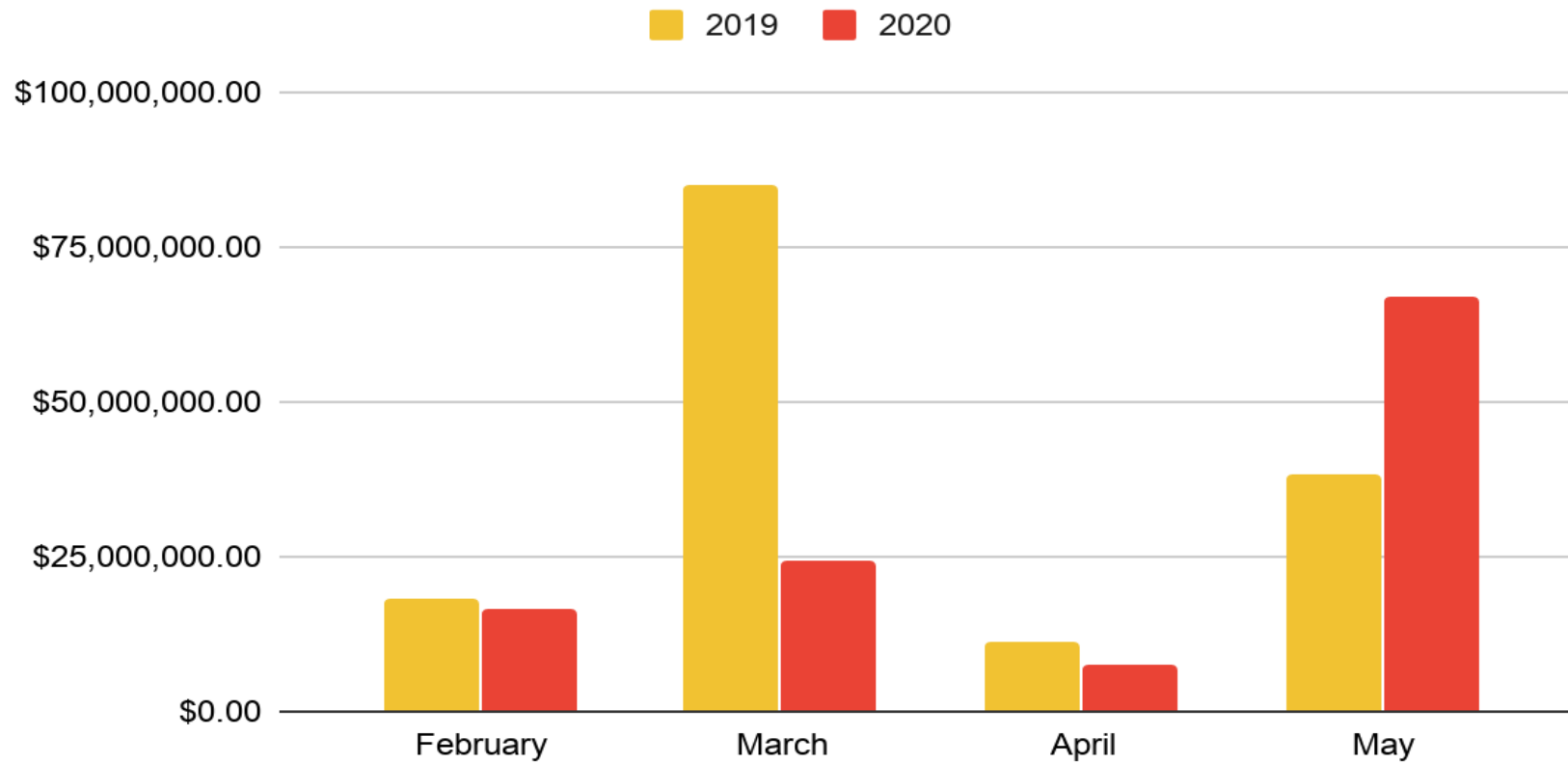


<https://tax.idaho.gov/i-1039.cfm>

June Collection for May, May Collection for April, April Collection for March, March Collection for February.
One month lag time on reporting.

State of Idaho Tax

Corporate Income Tax



[tps://tax.idaho.gov/i-1039.cfm](https://tax.idaho.gov/i-1039.cfm)

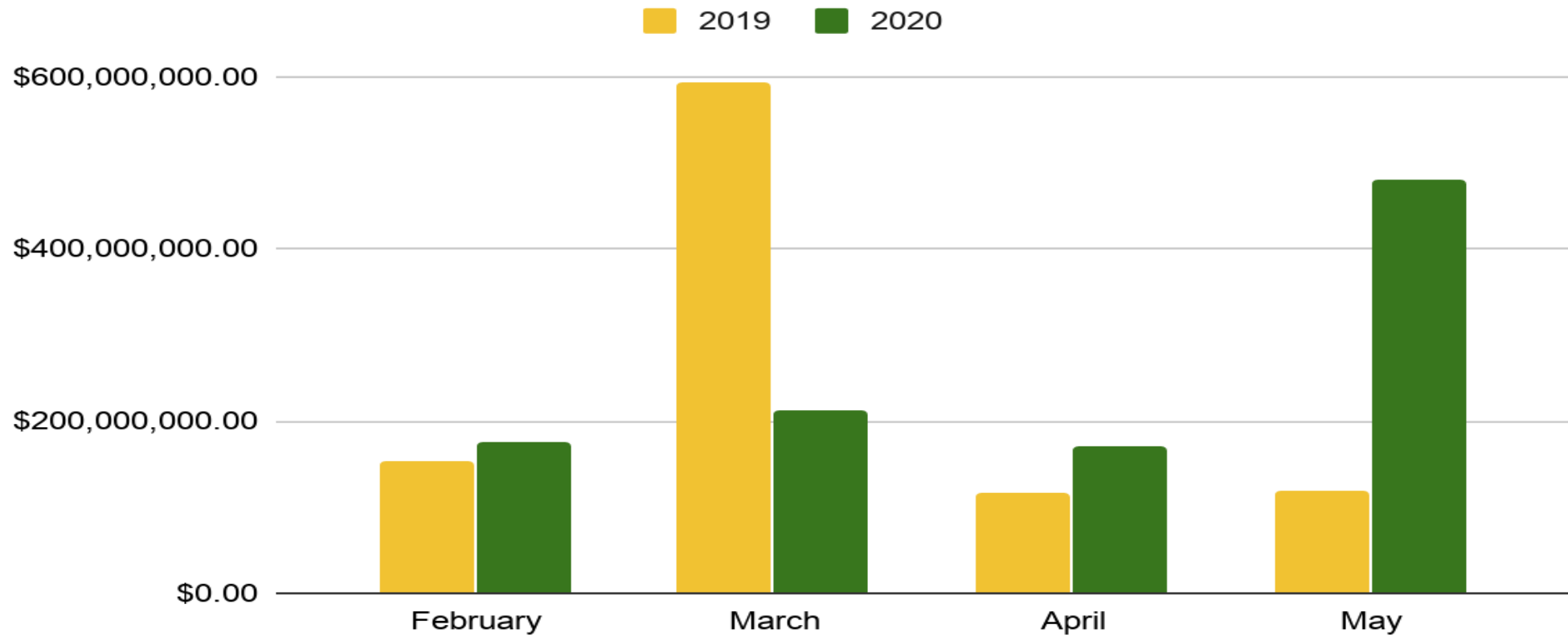
June Collection for May, May Collection for April, April Collection for March, March Collection for February.

One month lag time on reporting.



State of Idaho Tax

Individual Income Tax



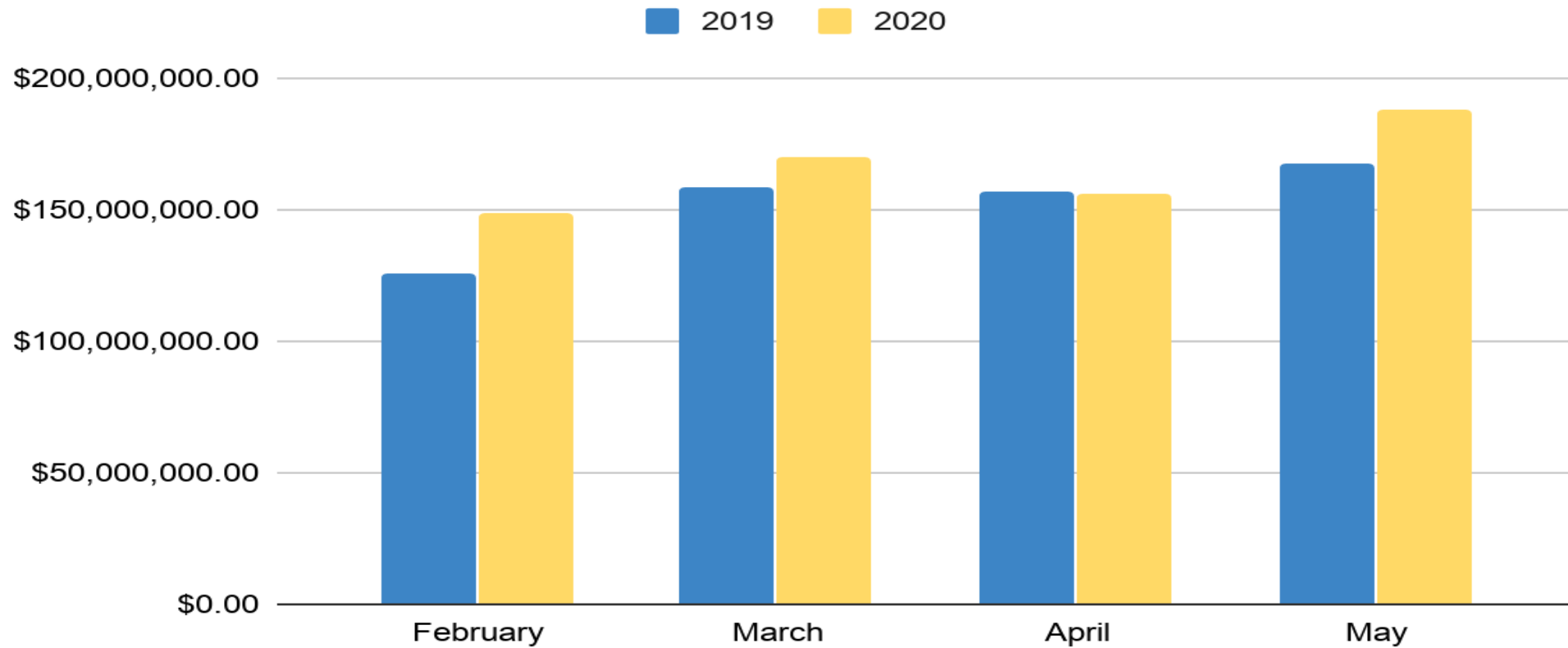
[tps://tax.idaho.gov/i-1039.cfm](https://tax.idaho.gov/i-1039.cfm)

June Collection for May, May Collection for April, April Collection for March, March Collection for February.

One month lag time on reporting.

State of Idaho Tax

Sales Tax



[tps://tax.idaho.gov/i-1039.cfm](https://tax.idaho.gov/i-1039.cfm)

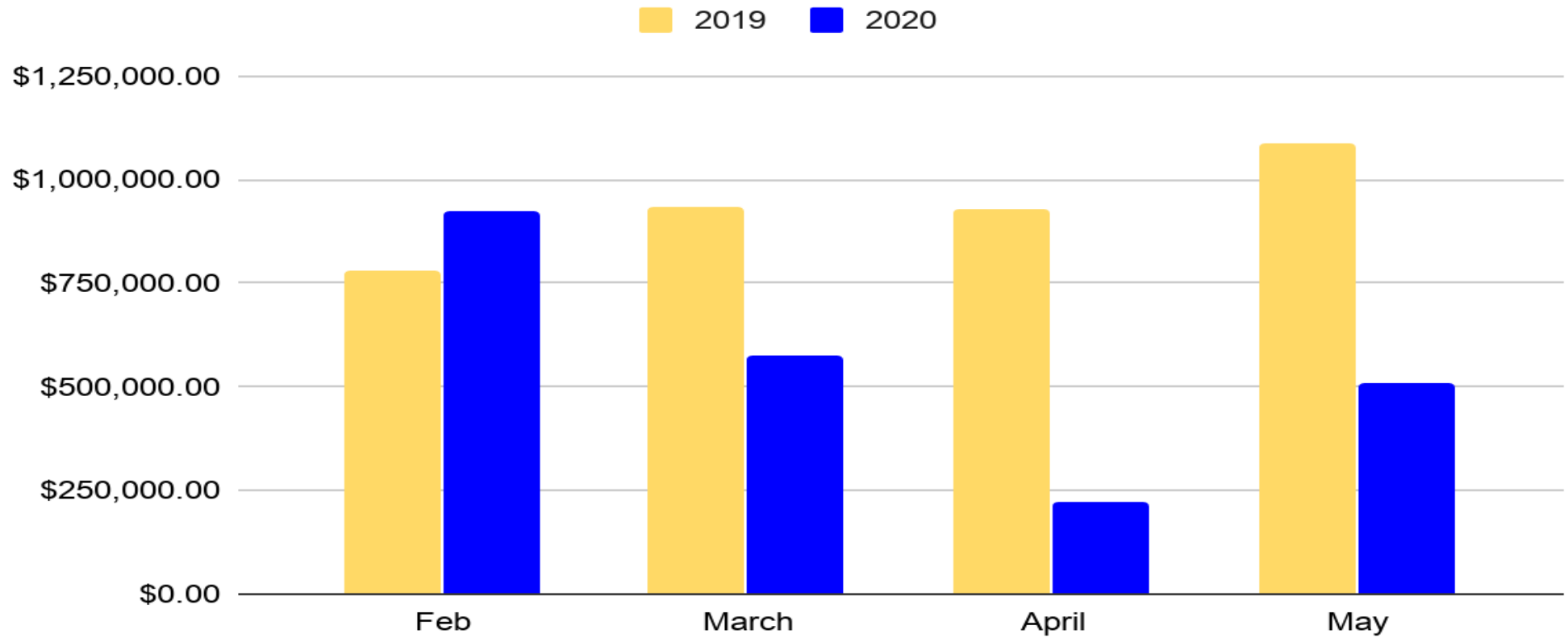
June Collection for May, May Collection for April, April Collection for March, March Collection for February.

One month lag time on reporting.



State of Idaho Tax

Travel and Convention Receipts



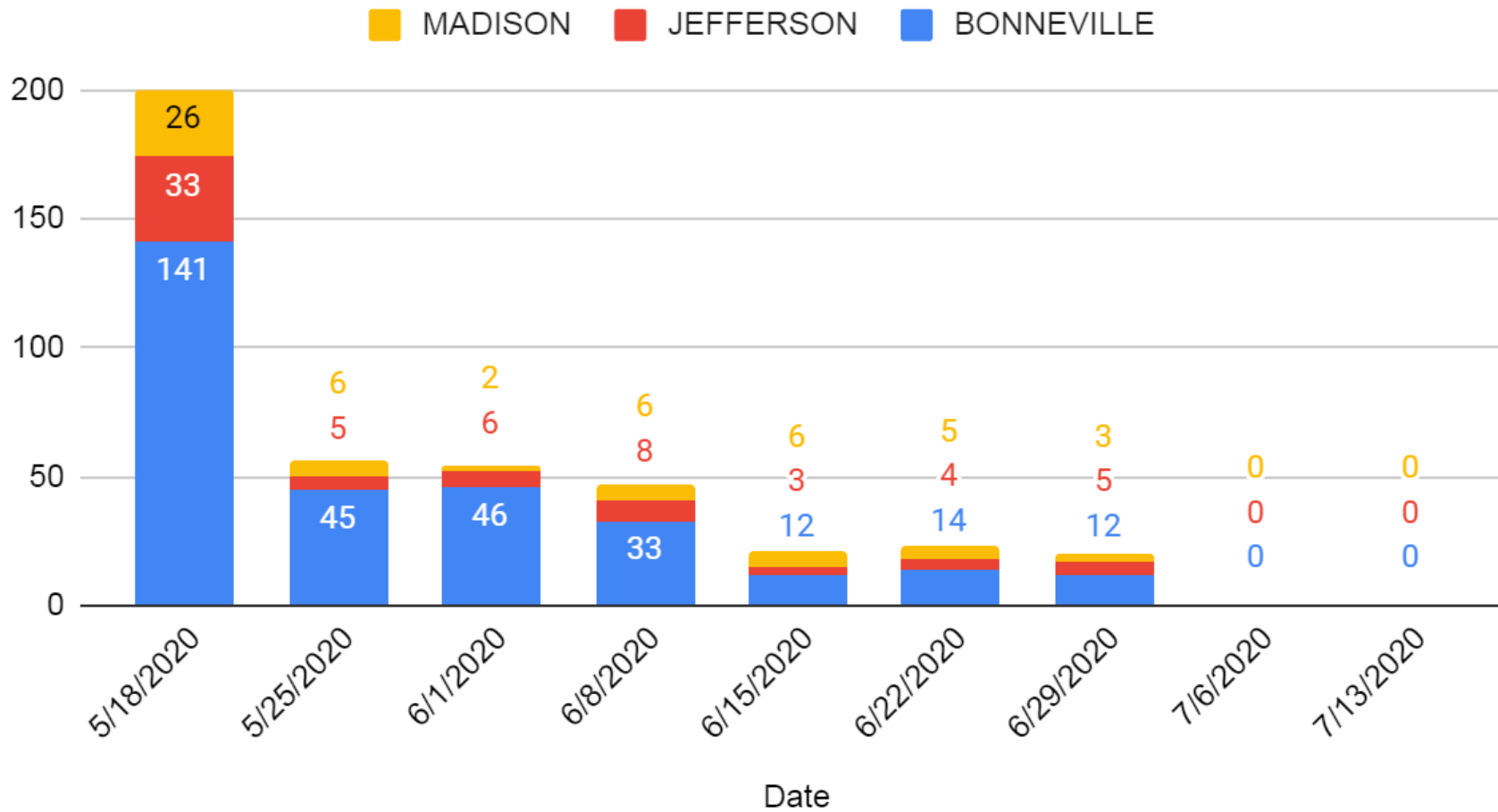
[tps://tax.idaho.gov/i-1039.cfm](https://tax.idaho.gov/i-1039.cfm)

June Collection for May, May Collection for April, April Collection for March, March Collection for February.
One month lag time on reporting.



Small Business Grants

Small Business Grants For the Week Ending



Distribution of Grants by County

Distribution By County

7001 Total Grants

JEFFERSON

1.3%

BONNEVILLE

4.8%

TWIN FALLS

6.3%

KOOTENAI

8.2%

CANYON

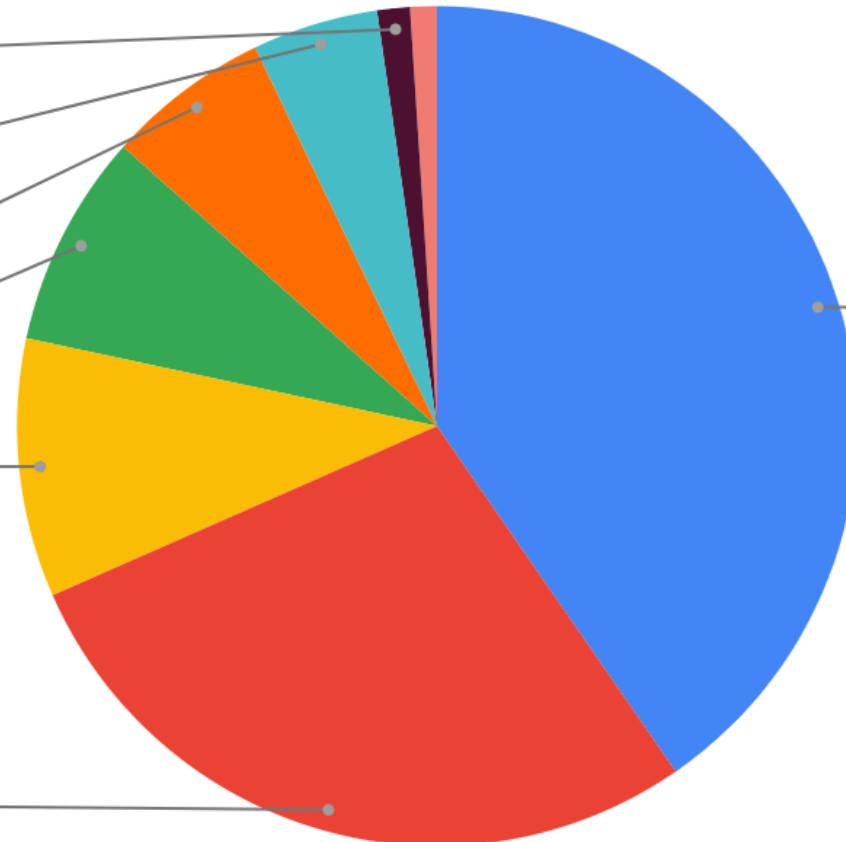
10.0%

ADA

28.0%

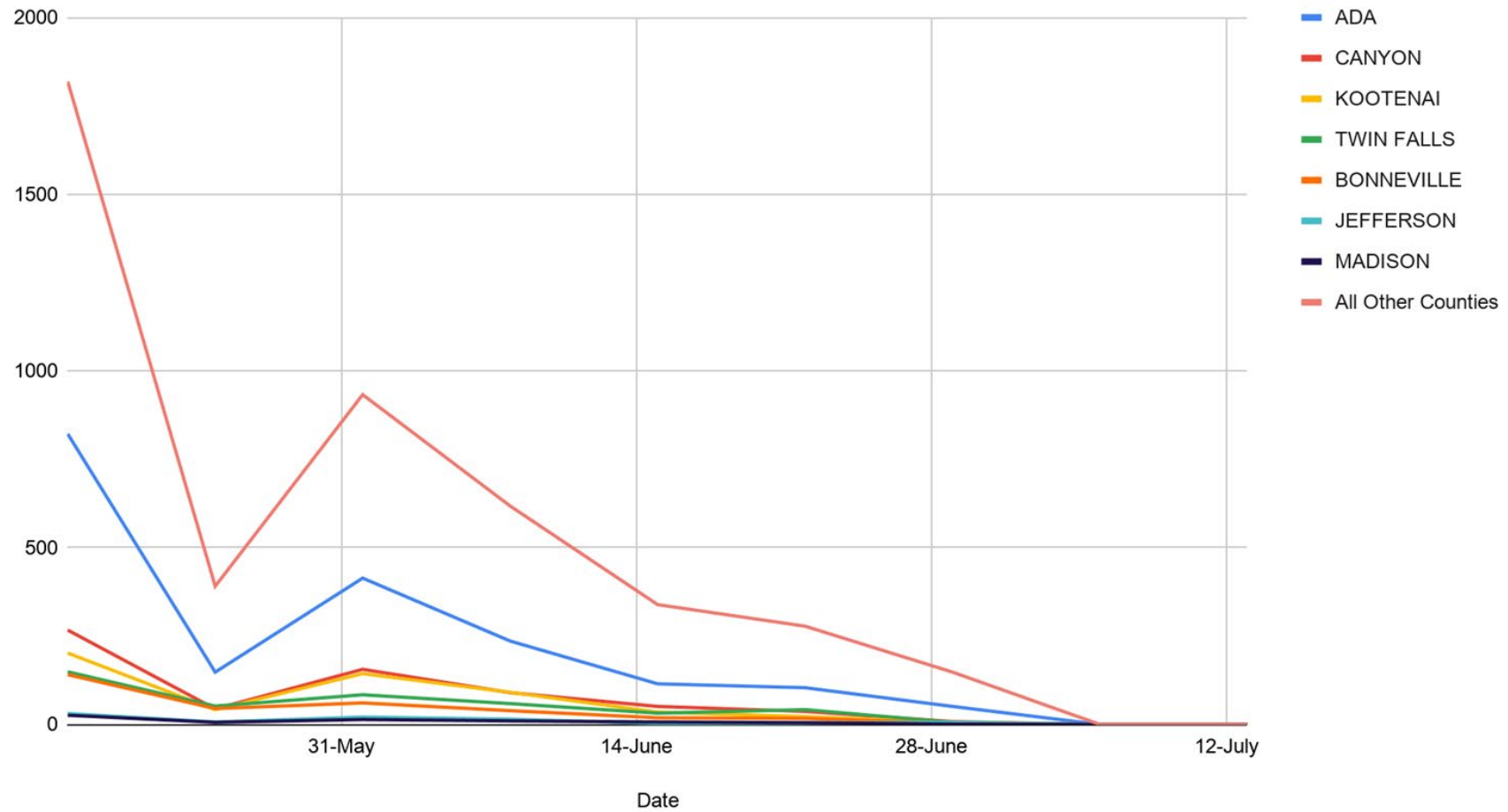
All Other Counties

40.4%



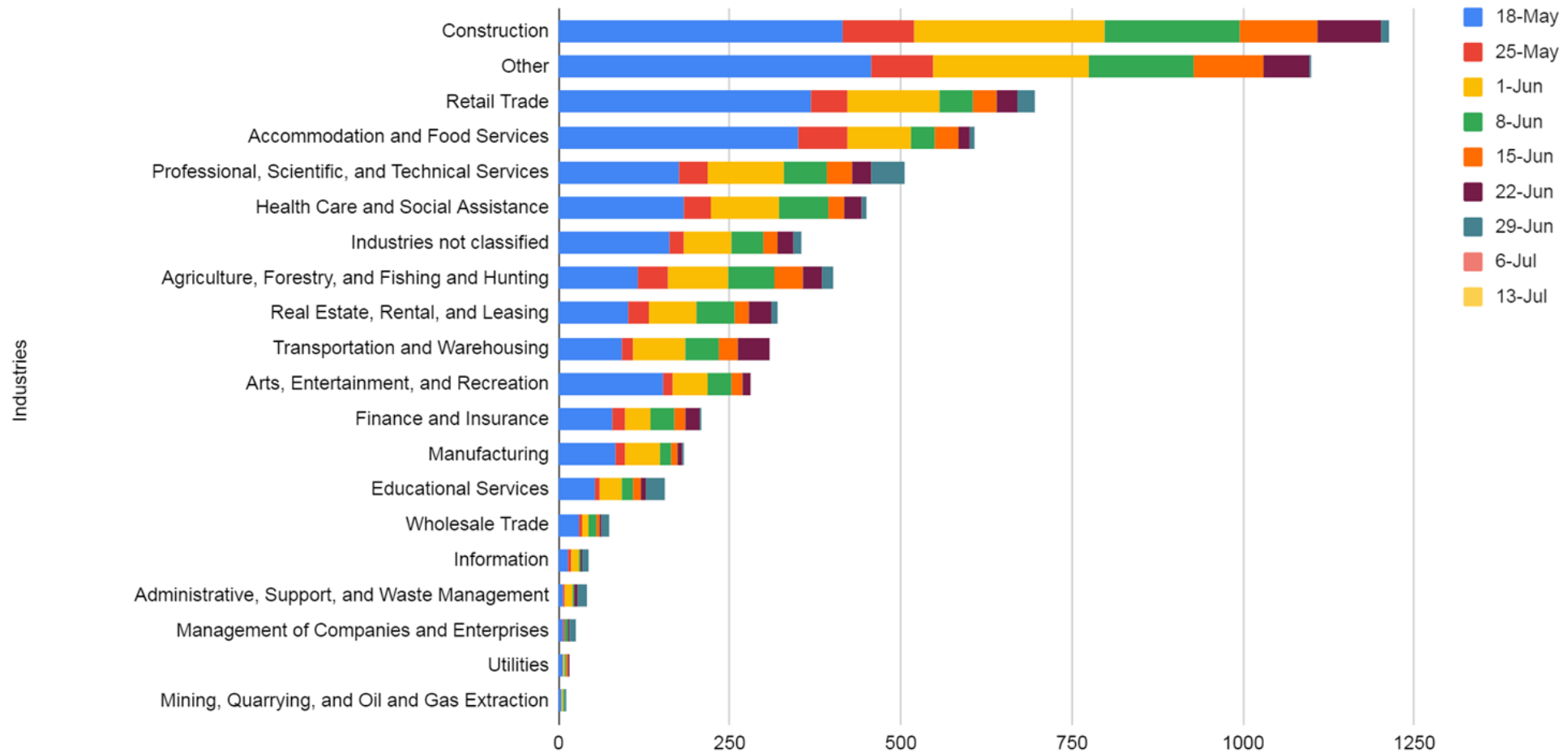
Grants Distributed Over Time

Trends Over Time (for the week ending)

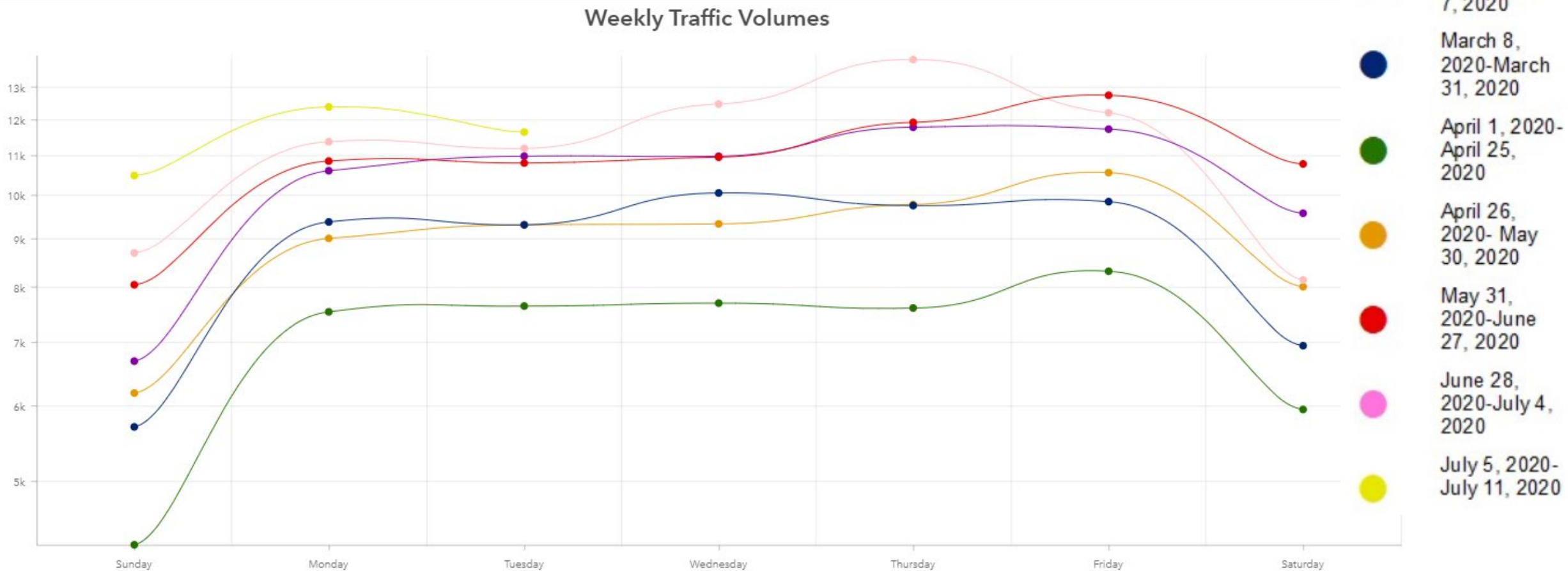


Distribution of Grants per Industry

Grants by Industry (for the week ending)



Traffic Volumes - Bonneville

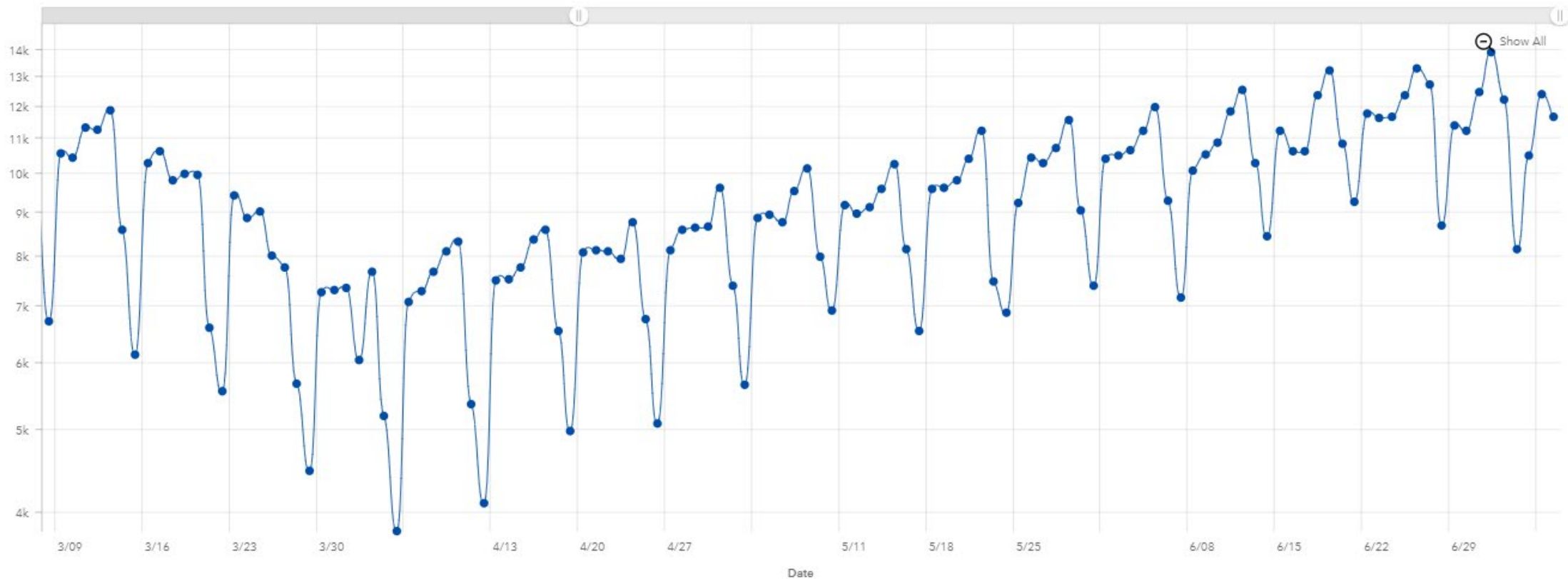


Last update: a few seconds ago



Traffic Volumes - Bonneville

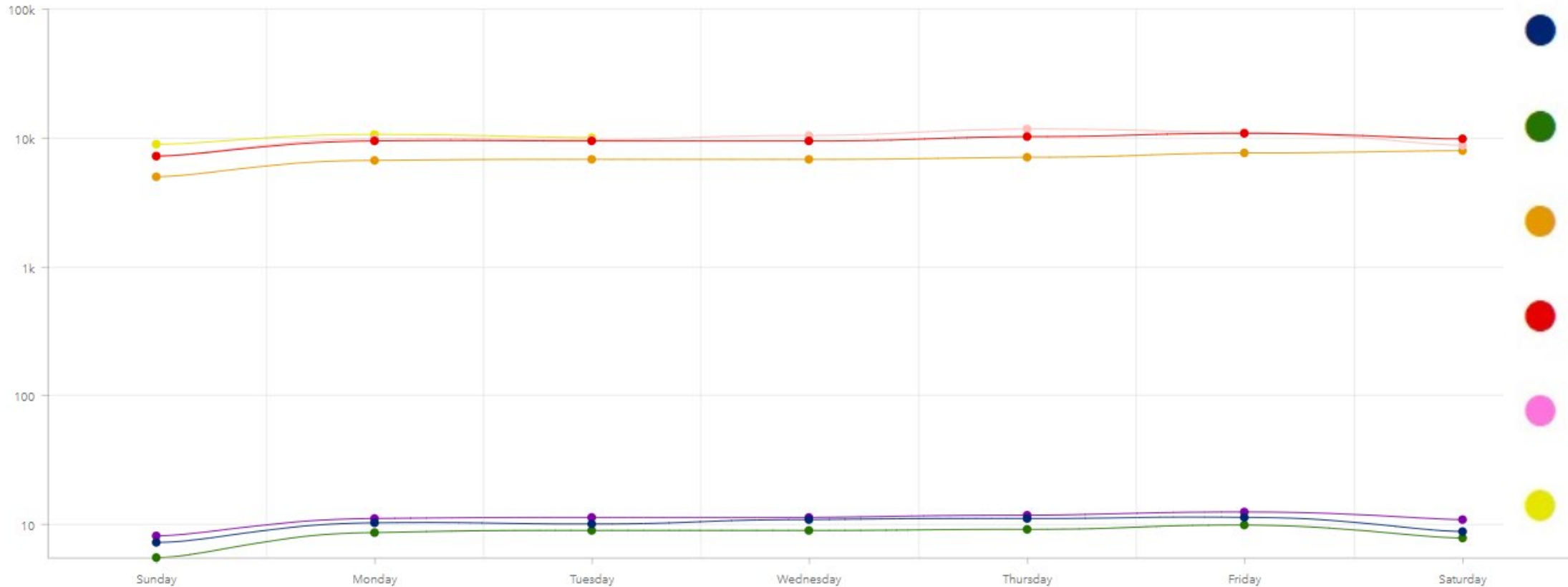
Average Daily Traffic Volumes for 2020



Last update: a few seconds ago

Traffic Volumes - Jefferson

Weekly Traffic Volumes

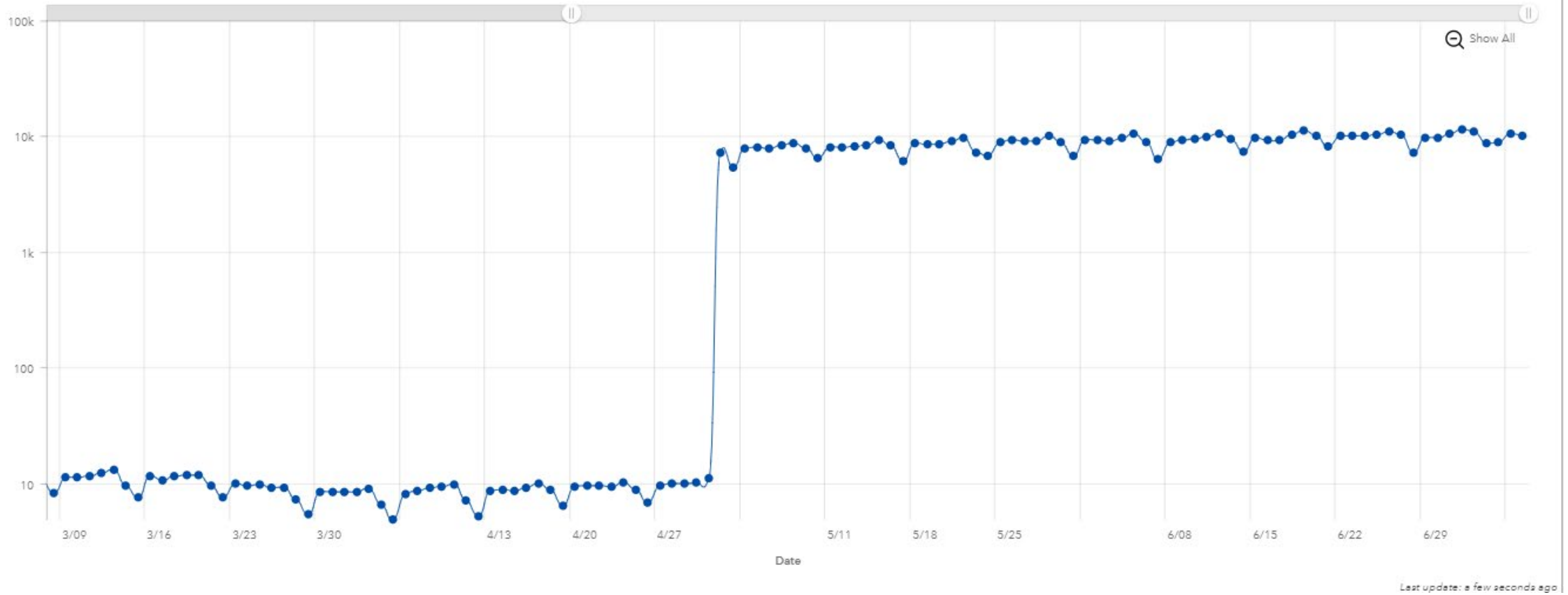


- March 1, 2020-March 7, 2020
- March 8, 2020-March 31, 2020
- April 1, 2020-April 25, 2020
- April 26, 2020-May 30, 2020
- May 31, 2020-June 27, 2020
- June 28, 2020-July 4, 2020
- July 5, 2020-July 11, 2020

Last update: a few seconds ago

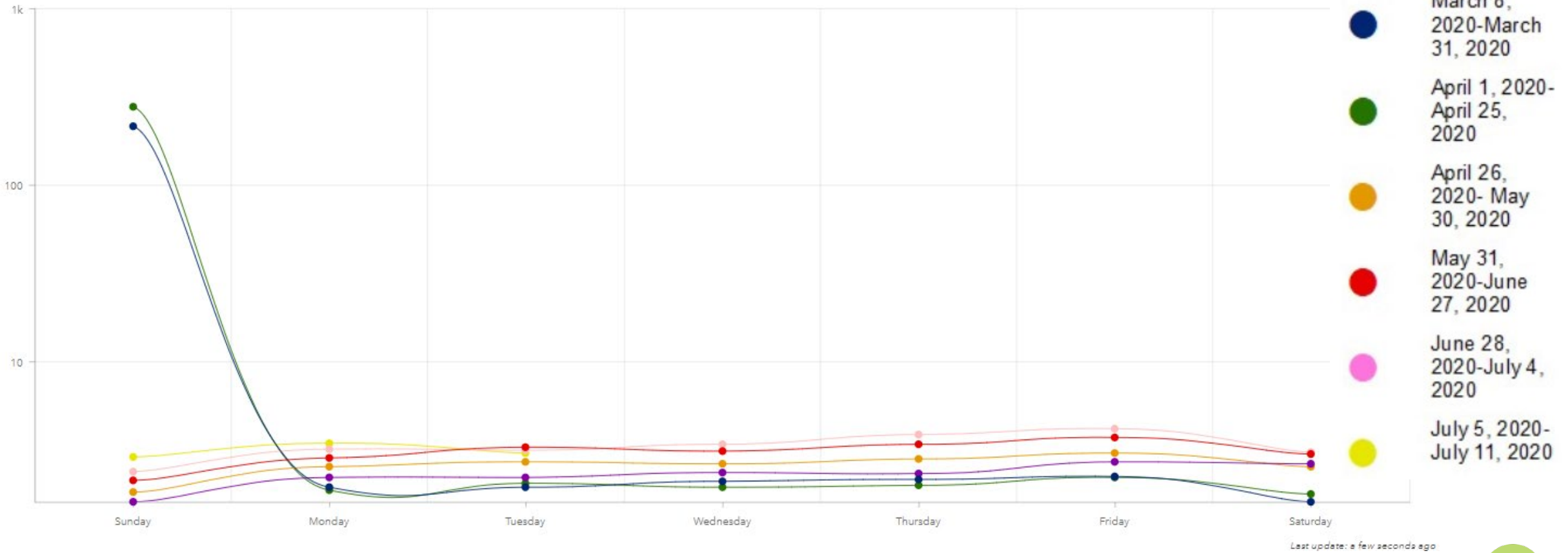
Traffic Volumes - Jefferson

Average Daily Traffic Volumes for 2020



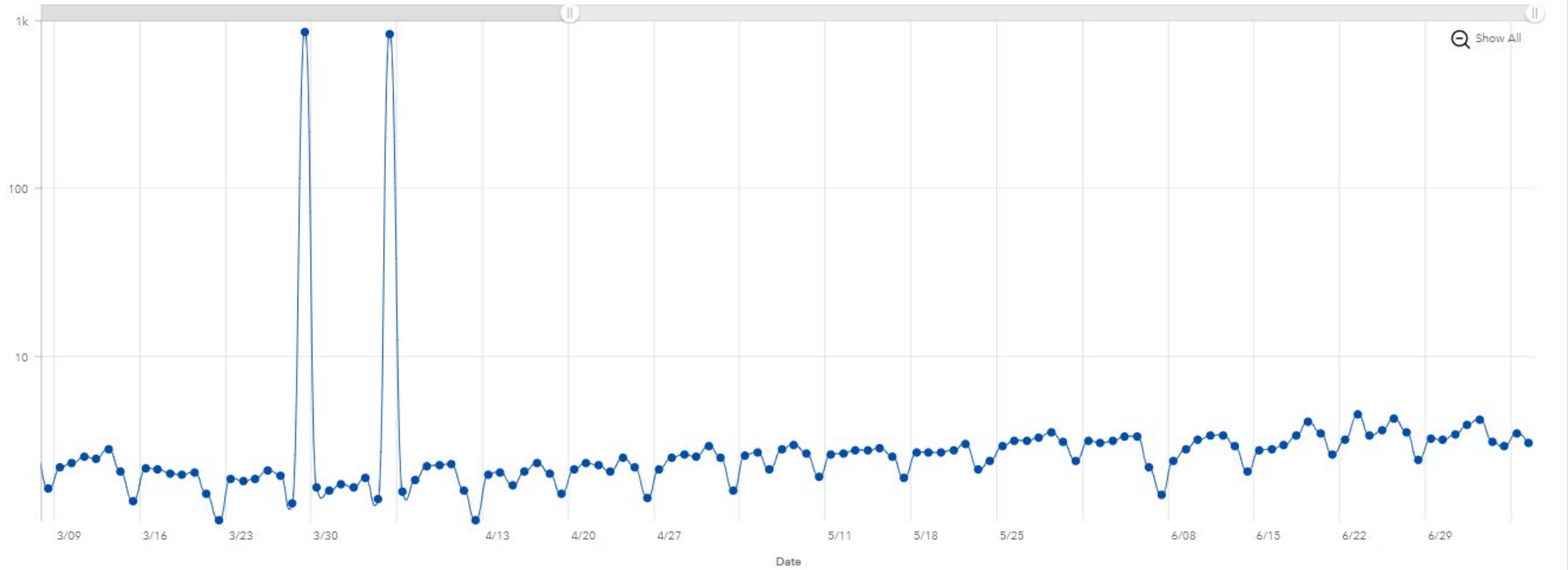
Traffic Volumes - Madison

Weekly Traffic Volumes



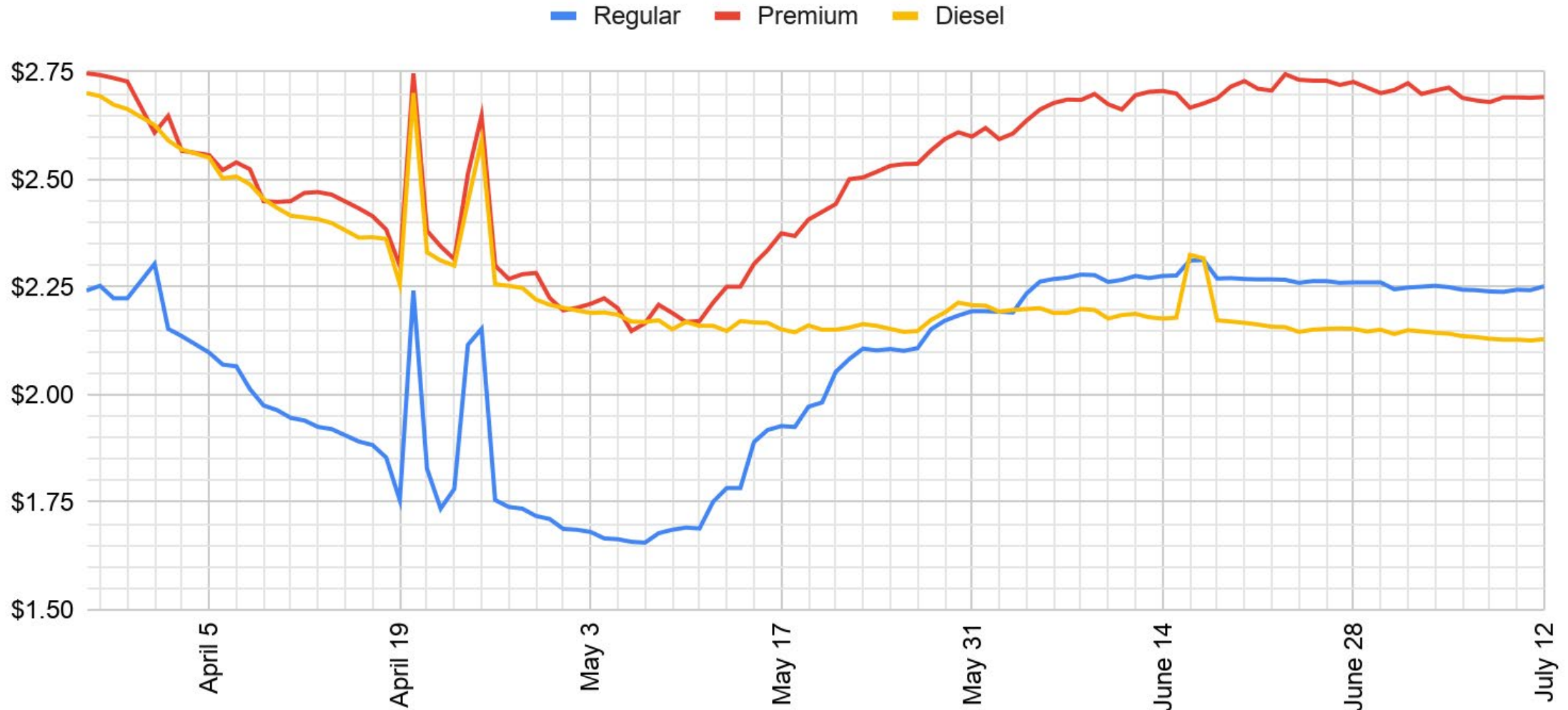
Traffic Volumes - Madison

Average Daily Traffic Volumes for 2020



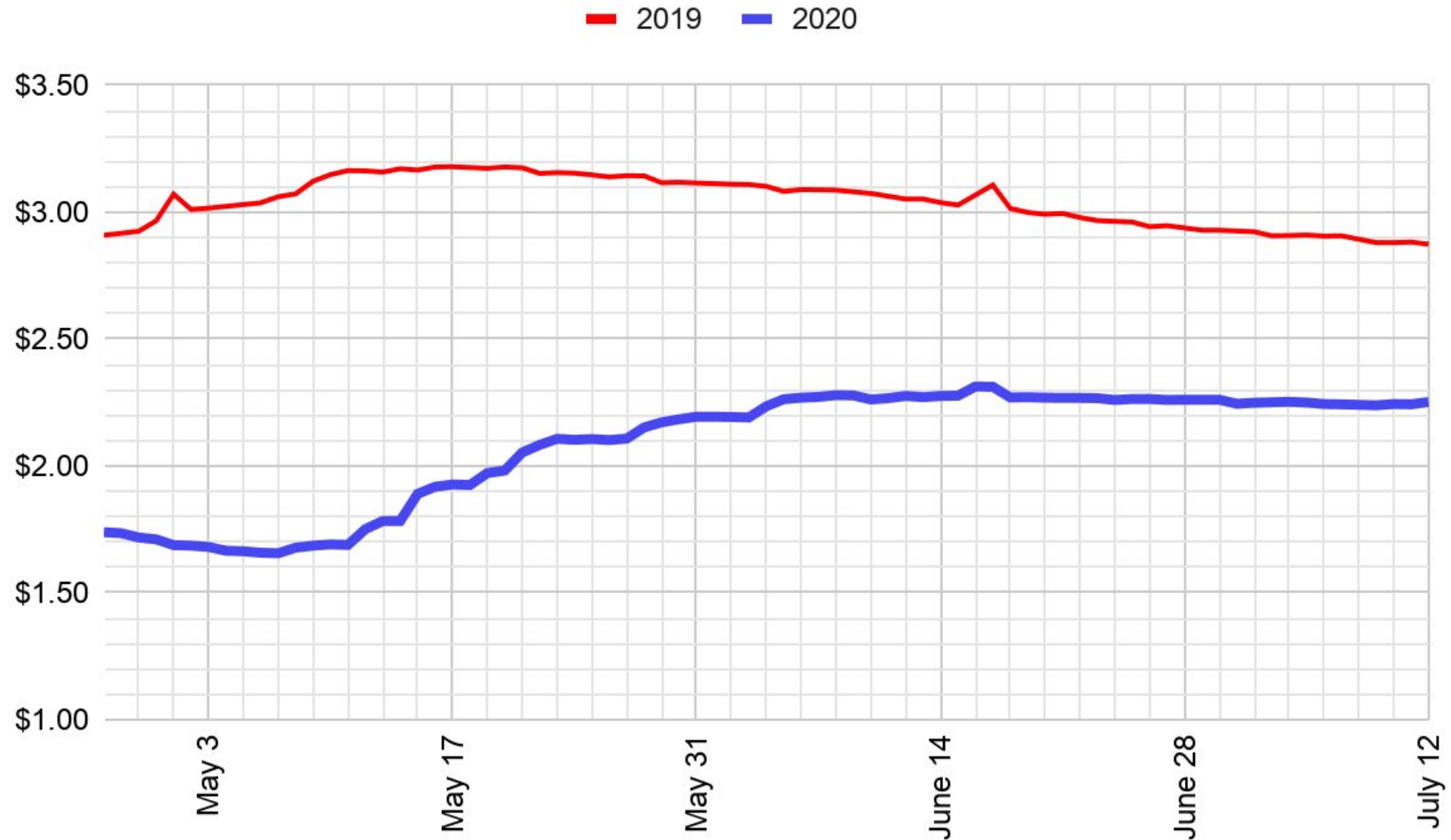
Last update: a few seconds ago

Idaho Falls Gasoline Prices



Idaho Falls Gasoline Prices

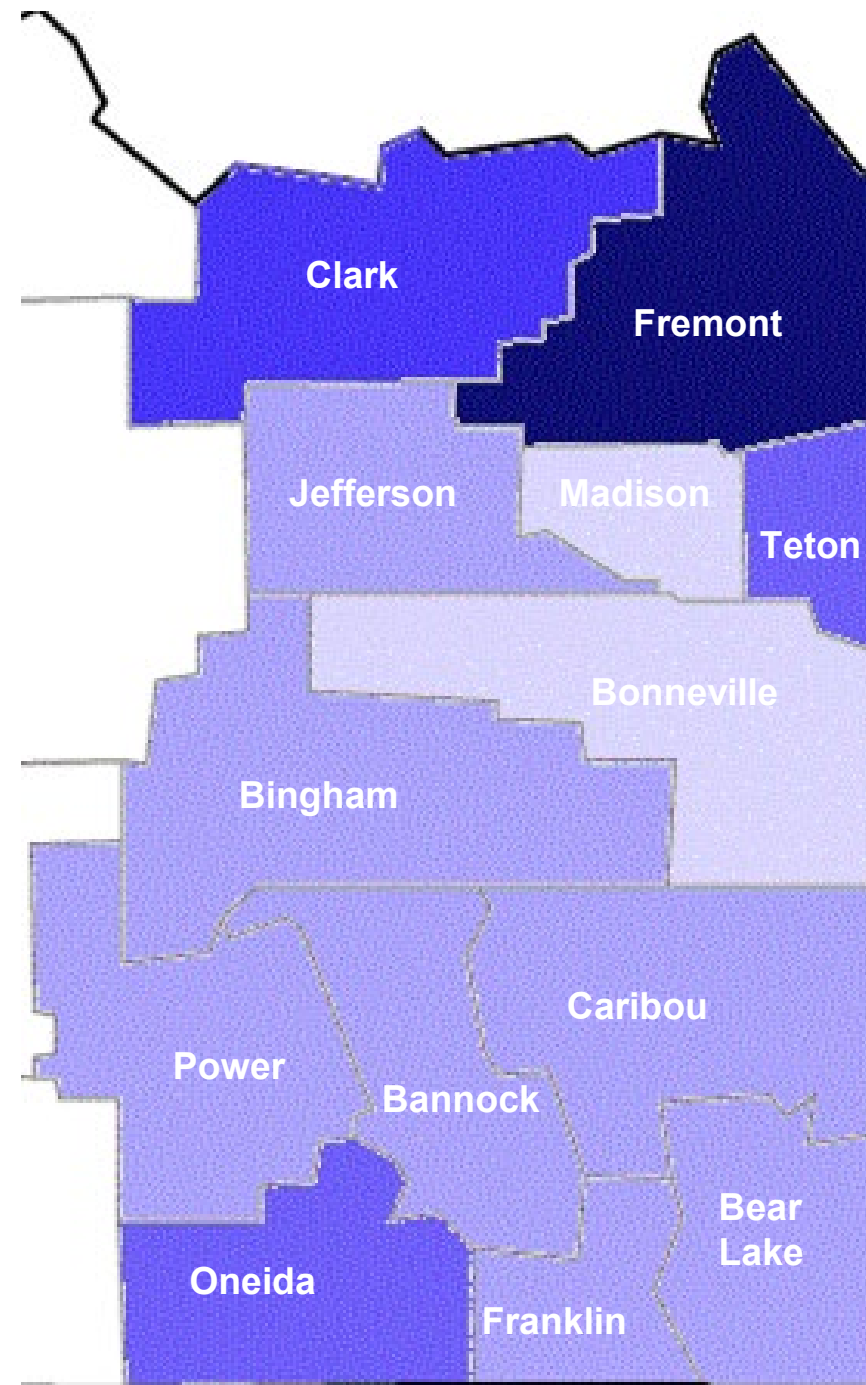
Idaho Falls' average gasoline prices with previous year comparison.



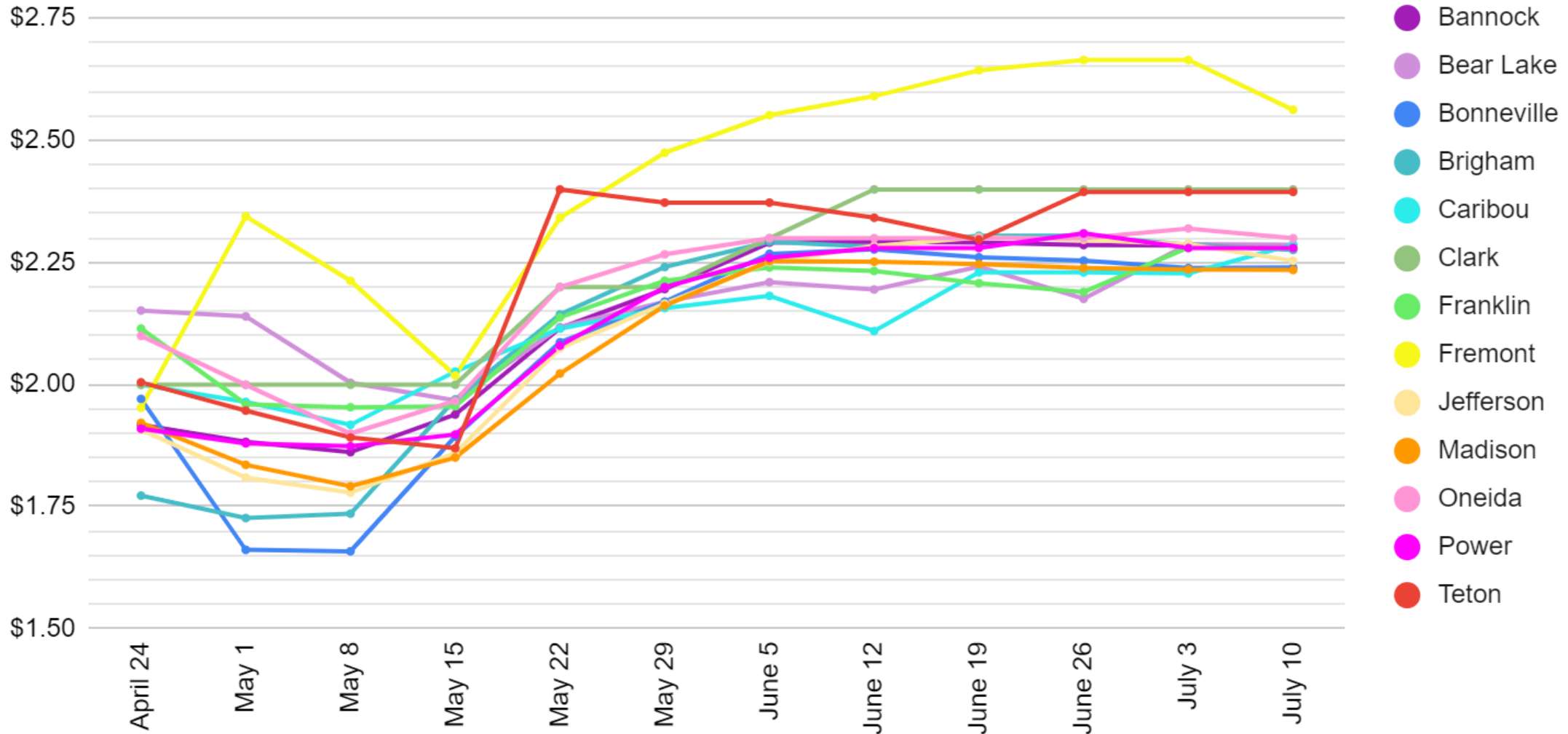
Idaho Counties Gasoline Prices

Average Regular Gasoline Prices

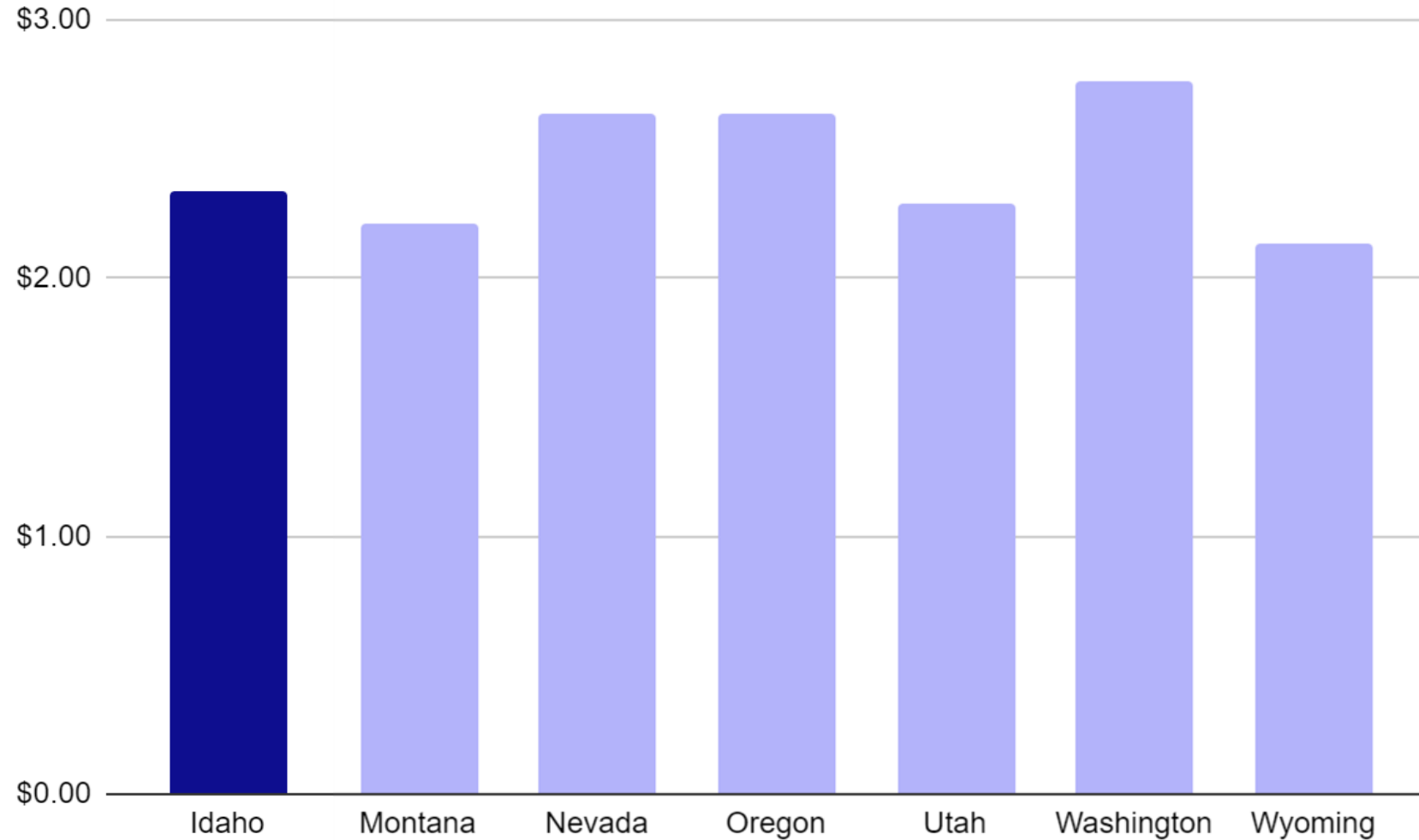
	\$2.14 - \$2.19
	\$2.20 - \$2.24
	\$2.25 - \$2.29
	\$2.30 - \$2.39
	\$2.40 - \$2.49
	\$2.50 - \$2.59
	\$2.60 - \$2.69



Idaho Counties Gasoline Prices

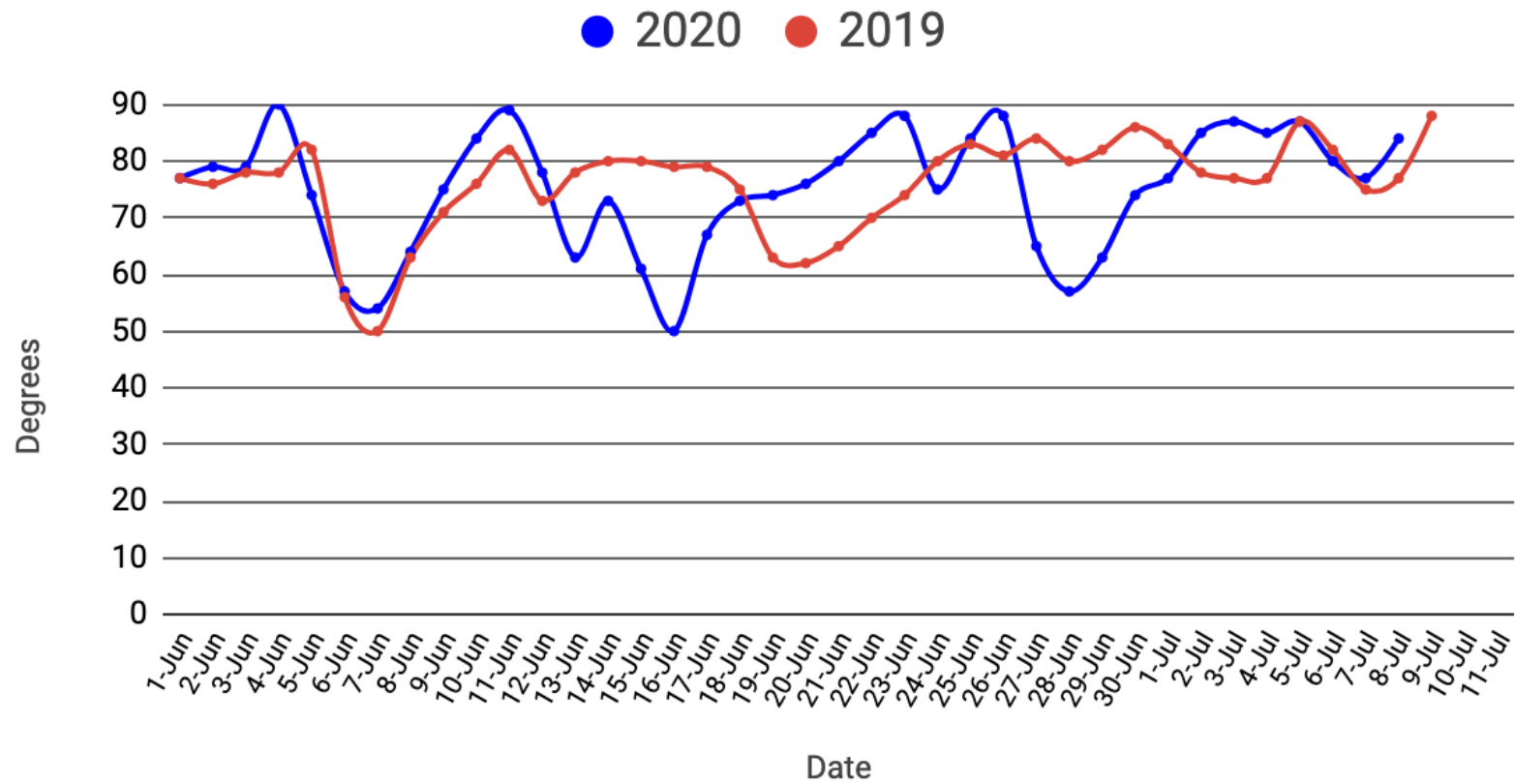


State Gasoline Price Comparison



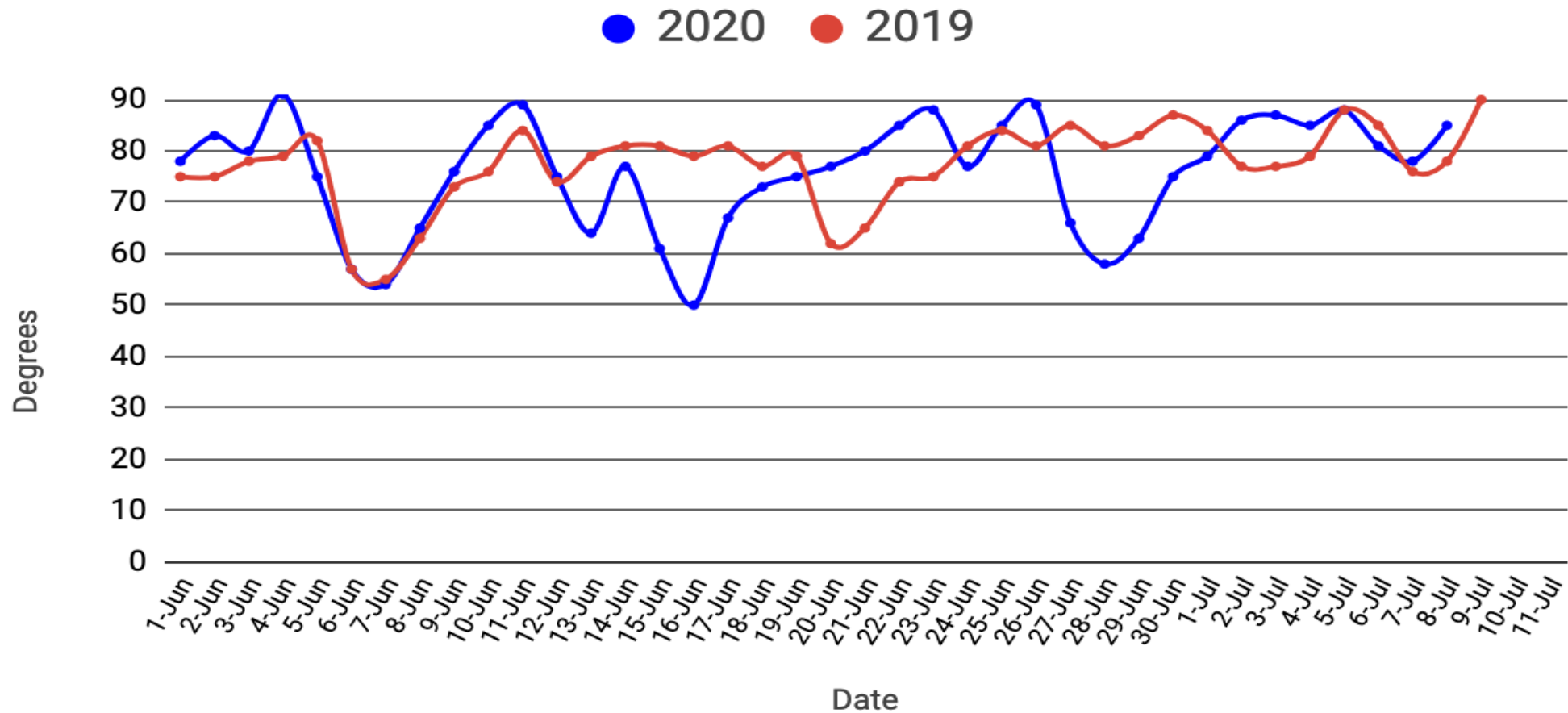
Rexburg Weather

Rexburg



Idaho Falls Weather

Idaho Falls





RESEARCH & BUSINESS
DEVELOPMENT CENTER

The Research and Business Development Center (RBDC) is a 501 (c) 3 non-profit with a mission to provide undergraduate students with meaningful work experience to better prepare them for careers and life.

Connecting students with clients to work on projects (similar to this report) that deliver value to both student and client is central to this mission.

Connect with the RBDC to see how our projects could help your business or organization with key insights through guided student projects across a broad range of disciplines and project types.

RBDCenter.org | 208.356.5009 | info@RBDCenter.org

